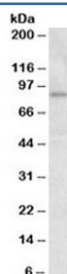


STAT3 Antibody (R33329)

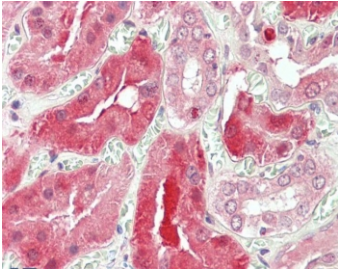
| Catalog No. | Formulation | Size |
|--------------|---|--------|
| R33329-100UG | 0.5 mg/ml in 1X TBS, pH7.3, with 0.5% BSA (US sourced) and 0.02% sodium azide | 100 ug |

[Bulk quote request](#)

| | |
|----------------------|---|
| Availability | 1-3 business days |
| Species Reactivity | Human |
| Predicted Reactivity | Mouse, Rat, Dog |
| Format | Antigen affinity purified |
| Clonality | Polyclonal (goat origin) |
| Isotype | Goat Ig |
| Purity | Antigen affinity |
| Gene ID | 6774 |
| Localization | Nuclear, cytoplasmic |
| Applications | Western Blot : 1-3ug/ml IHC (FFPE) : 5ug/ml ELISA (peptide) LOD : 1:16000 |
| Limitations | This STAT3 antibody is available for research use only. |



Western blot testing of human heart lysate with STAT3 antibody at 1ug/ml. Predicted molecular weight ~88 kDa.



IHC testing of FFPE human kidney tissue with STAT3 antibody at 5ug/ml. Required HIER: steamed antigen retrieval with pH6 citrate buffer; AP-staining.

Description

Additional name(s) for this target protein: Signal transducer and activator of transcription 3

Application Notes

Optimal dilution of the STAT3 antibody should be determined by the researcher.

Immunogen

Amino acids CRPESQEHPEADP were used as the immunogen for this STAT3 antibody.

Storage

Aliquot and store the STAT3 antibody at -20oC.