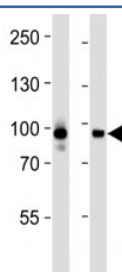


STAT3 Antibody [clone 1200CT146.104.153] (F52478)

| Catalog No. | Formulation | Size |
|---------------|--|---------|
| F52478-0.4ML | In 1X PBS, pH 7.4, with 0.09% sodium azide | 0.4 ml |
| F52478-0.08ML | In 1X PBS, pH 7.4, with 0.09% sodium azide | 0.08 ml |

[Bulk quote request](#)

| | |
|-----------------------------|---|
| Availability | 1-3 business days |
| Species Reactivity | Human |
| Predicted Reactivity | Mouse, Rat, Pig |
| Format | Purified |
| Clonality | Monoclonal (mouse origin) |
| Isotype | Mouse IgG2a, k |
| Clone Name | 1200CT146.104.153 |
| Purity | Purified |
| UniProt | P40763 |
| Applications | Western Blot : 1:1000 |
| Limitations | This STAT3 antibody is available for research use only. |



Western blot analysis of lysate from CEM, HeLa cell line (left to right) using STAT3 antibody at 1:1000 for each lane.

Description

Signal transducer and transcription activator that mediates cellular responses to interleukins, KITLG/SCF and other growth factors. May mediate cellular responses to activated FGFR1, FGFR2, FGFR3 and FGFR4. Binds to the interleukin-6 (IL-6)- responsive elements identified in the promoters of various acute- phase protein genes. Activated by IL31 through IL31RA. Cytoplasmic STAT3 represses macroautophagy by inhibiting EIF2AK2/PKR activity. Plays an important role in host defense in methicillin-resistant *S.aureus* lung infection by regulating the expression of the

antimicrobial lectin REG3G (By similarity).

Application Notes

Titration of the STAT3 antibody may be required due to differences in protocols and secondary/substrate sensitivity.

Immunogen

This STAT3 antibody was produced from a mouse immunized with a recombinant protein from human.

Storage

Aliquot the STAT3 antibody and store frozen at -20oC or colder. Avoid repeated freeze-thaw cycles.