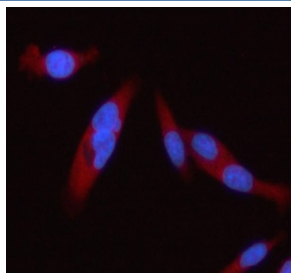


STAT2 Antibody (RQ4293)

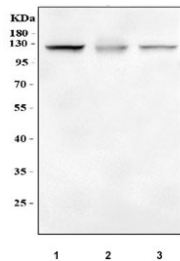
Catalog No.	Formulation	Size
RQ4293	0.5mg/ml if reconstituted with 0.2ml sterile DI water	100 ug

Bulk quote request

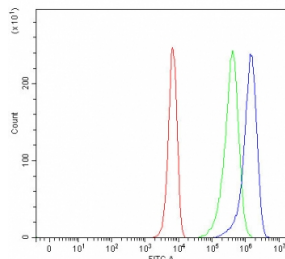
Availability	1-3 business days
Species Reactivity	Human
Predicted Reactivity	Human
Format	Antigen affinity purified
Clonality	Polyclonal (rabbit origin)
Isotype	Rabbit IgG
Purity	Antigen affinity purified
Buffer	Lyophilized from 1X PBS with 2% Trehalose
UniProt	P52630
Localization	Cytoplasm, nucleus
Applications	Western Blot : 0.5-1ug/ml Immunofluorescence : 5ug/ml Flow Cytometry : 1-3ug/million cells
Limitations	This STAT2 antibody is available for research use only.



Immunofluorescent staining of FFPE human PC-3 cells with STAT2 antibody (red) and DAPI nuclear stain (blue). HIER: steam section in pH6 citrate buffer for 20 min.



Western blot testing of human 1) K562, 2) HT1080 and 3) HeLa cell lysate with STAT2 antibody at 0.5ug/ml. Expected molecular weight: 98-113 kDa depending on phosphorylation level.



Flow cytometry testing of fixed and permeabilized human K562 cells with STAT2 antibody at 1ug/million cells (blocked with goat sera); Red=cells alone, Green=isotype control, Blue= STAT2 antibody.

Description

Signal transducer and activator of transcription 2 is a protein that in humans is encoded by the STAT2 gene. The protein encoded by this gene is a member of the STAT protein family. The International Radiation Hybrid Mapping Consortium mapped the STAT2 gene to chromosome 12. STAT2 is a transcription factor critical to the signal transduction pathway of type I interferons. ISGF3 (STAT2) assembly involves p48 functioning as an adaptor protein to recruit Stat1 and Stat2 to an IFN- α -stimulated response element, Stat2 contributes a potent transactivation domain but is unable to directly contact DNA, while Stat1 stabilizes the heteromeric complex by contacting DNA directly.

Application Notes

Optimal dilution of the STAT2 antibody should be determined by the researcher.

Immunogen

Amino acids FQDQLHQLYSHSLLPVDIRQYLAVWIEDQNWQEA were used as the immunogen for the STAT2 antibody.

Storage

After reconstitution, the STAT2 antibody can be stored for up to one month at 4oC. For long-term, aliquot and store at -20oC. Avoid repeated freezing and thawing.