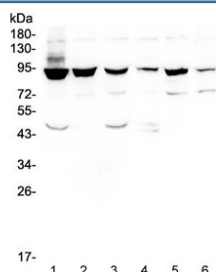


## STAT1 Antibody (R32722)

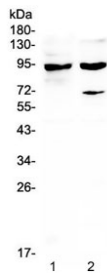
| Catalog No. | Formulation   | Size   |
|-------------|---|--------|
| R32722      | 0.5mg/ml if reconstituted with 0.2ml sterile DI water | 100 ug |

**Bulk quote request**

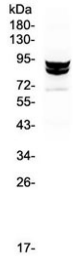
|                           |   |
|---------------------------|---|
| <b>Availability</b>       | 1-3 business days   |
| <b>Species Reactivity</b> | Human, Mouse, Rat, Monkey   |
| <b>Format</b>             | Antigen affinity purified   |
| <b>Clonality</b>          | Polyclonal (rabbit origin)  |
| <b>Isotype</b>            | Rabbit IgG  |
| <b>Purity</b>             | Antigen affinity  |
| <b>Buffer</b>             | Lyophilized from 1X PBS with 2.5% BSA, 0.025% sodium azide  |
| <b>UniProt</b>            | P42224  |
| <b>Localization</b>       | Cytoplasmic, nuclear  |
| <b>Applications</b>       | Western Blot : 0.5-1ug/ml<br>Immunohistochemistry (FFPE) : 1-2ug/ml<br>Immunofluorescence/Immunocytochemistry (FFPE) : 2-4ug/ml<br>Flow Cytometry : 1-3ug/10 <sup>6</sup> cells |
| <b>Limitations</b>        | This STAT1 antibody is available for research use only.   |



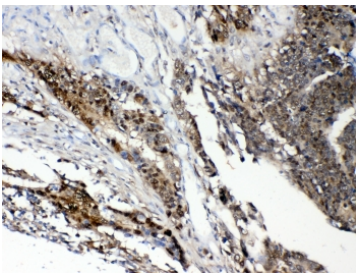
Western blot testing of human 1) HeLa, 2) PC-3, 3) Caco-2, 4) A549, 5) K562 and 6) Raji cell lysate with STAT1 antibody at 0.5ug/ml. Predicted molecular weight ~91/84 kDa (alpha/beta).



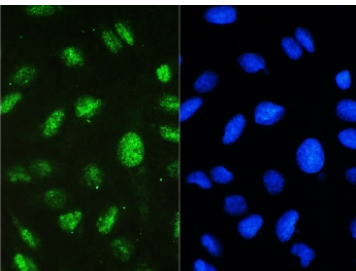
Western blot testing of 1) rat thymus and 2) mouse thymus lysate with STAT1 antibody at 0.5ug/ml. Predicted molecular weight ~91/84 kDa (alpha/beta).



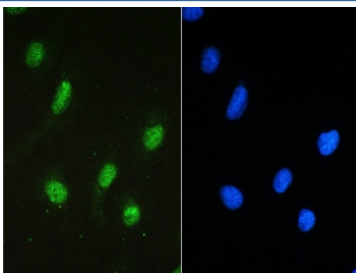
Western blot testing of monkey COS7 cell lysate with STAT1 antibody at 0.5ug/ml. Predicted molecular weight ~91/84 kDa (alpha/beta).



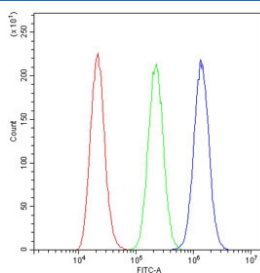
IHC testing of FFPE human intestinal cancer tissue with STAT1 antibody at 1ug/ml. Required HIER: steam section in pH6 citrate buffer for 20 min and allow to cool prior to testing.



IF/ICC staining of FFPE human U-2 OS cells with STAT1 antibody (green) at 2ug/ml and DAPI nuclear stain (blue). HIER: steam section in pH6 citrate buffer for 20 min and allow to cool prior to testing.



IF/ICC staining of FFPE human U-2 OS cells with STAT1 antibody (green) at 2ug/ml and DAPI nuclear stain (blue). HIER: steam section in pH6 citrate buffer for 20 min and allow to cool prior to testing.



Flow cytometry testing of human A431 cells with STAT1 antibody at 1ug/10<sup>6</sup> cells (blocked with goat sera); Red=cells alone, Green=isotype control, Blue= STAT1 antibody.

Signal transducer and activator of transcription 1 is a transcription factor which in humans is encoded by the STAT1 gene. The protein encoded by this gene is a member of the STAT protein family. In response to cytokines and growth factors, STAT family members are phosphorylated by the receptor associated kinases, and then form homo- or heterodimers that translocate to the cell nucleus where they act as transcription activators. This protein can be activated by various ligands including interferon-alpha, interferon-gamma, EGF, PDGF and IL6. This protein mediates the expression of a variety of genes, which is thought to be important for cell viability in response to different cell stimuli and pathogens. Two alternatively spliced transcript variants encoding distinct isoforms have been described.

## **Application Notes**

Optimal dilution of the STAT1 antibody should be determined by the researcher.

## **Immunogen**

Amino acids S2-A230 from the human protein were used as the immunogen for the STAT1 antibody.

## **Storage**

After reconstitution, the STAT1 antibody can be stored for up to one month at 4°C. For long-term, aliquot and store at -20°C. Avoid repeated freezing and thawing.