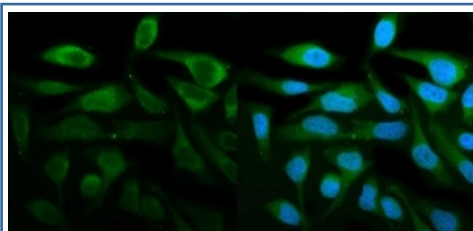


STAT1 Antibody (R30259)

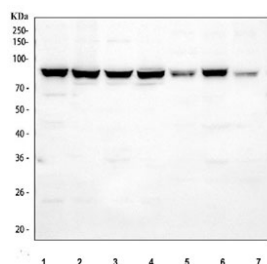
Catalog No.	Formulation	Size
R30259	0.5mg/ml if reconstituted with 0.2ml sterile DI water	100 ug

Bulk quote request

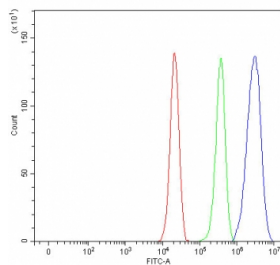
Availability	1-3 business days
Species Reactivity	Human, Mouse, Rat
Format	Antigen affinity purified
Clonality	Polyclonal (rabbit origin)
Isotype	Rabbit IgG
Purity	Antigen affinity
Buffer	Lyophilized from 1X PBS with 2% Trehalose
UniProt	P42224
Applications	Western Blot : 0.5-1ug/ml Immunofluorescence : 5ug/ml Flow Cytometry : 1-3ug/ml
Limitations	This STAT1 antibody is available for research use only.



Immunofluorescent staining of FFPE human HeLa cells with STAT1 antibody (green) and DAPI nuclear stain (blue). HIER: steam section in pH6 citrate buffer for 20 min.



Western blot testing of 1) human A549, 2) human HeLa, 3) human 293T, 4) human K562, 5) rat PC-12, 6) rat NRK and 7) mouse NIH 3T3 cell lysate with STAT1 antibody. Predicted molecular weight: ~91/84 kDa (alpha/beta).



Flow cytometry testing of fixed and permeabilized human A549 cells with STAT1 antibody at 1ug/million cells (blocked with goat sera); Red=cells alone, Green=isotype control, Blue= STAT1 antibody.

Description

Chen et al.(1998) determined the crystal structure of the DNA complex of a 67-kD core fragment of the Signal Transducer and Activator of Transcription 1 homodimer, lacking only the N-domain and the C-terminal transcriptional activation domain, at 2.9-angstrom resolution. Phosphorylation of STAT1 was also decreased in rheumatoid arthritis lymphocytes. It plays a key role in immunity against mycobacterial and viral infections. Activation of the STAT pathway is important in fibroblast growth factor (FGF) modulation of chondrocyte proliferation and endochondral bone formation during embryogenesis.

Application Notes

The stated application concentrations are suggested starting amounts. Titration of the STAT1 antibody may be required due to differences in protocols and secondary/substrate sensitivity.

Immunogen

Amino acids 364-378 (FDKDVNERNTVKGFR-human) were used as the immunogen for this STAT1 antibody.

Storage

After reconstitution, the STAT1 antibody can be stored for up to one month at 4oC. For long-term, aliquot and store at -20oC. Avoid repeated freezing and thawing.