

SSEA-1 Antibody [clone SPM490] (V2523)

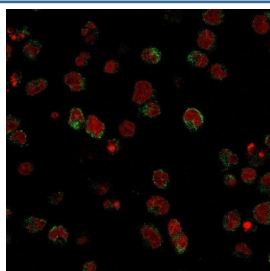
Catalog No.	Formulation	Size
V2523-100UG	0.2 mg/ml in 1X PBS with 0.1 mg/ml BSA (US sourced) and 0.05% sodium azide	100 ug
V2523-20UG	0.2 mg/ml in 1X PBS with 0.1 mg/ml BSA (US sourced) and 0.05% sodium azide	20 ug
V2523SAF-100UG	1 mg/ml in 1X PBS; BSA free, sodium azide free	100 ug



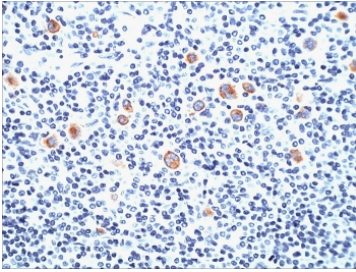
Citations (2)

[Bulk quote request](#)

Availability	1-3 business days
Species Reactivity	Human
Format	Purified
Clonality	Monoclonal (mouse origin)
Isotype	Mouse IgM, kappa
Clone Name	SPM490
Purity	PEG precipitation
UniProt	P22083
Localization	Cell surface and granular paranuclear
Applications	Immunofluorescence : 1-2ug/ml Immunohistochemistry (FFPE) : 1-2ug/ml for 30 min at RT
Limitations	This SSEA-1 antibody is available for research use only.



Immunofluorescent staining of human U937 cells with Calponin antibody (clone SPM490, green) and Reddot nuclear stain (red).



IHC: Formalin-fixed, paraffin-embedded human Hodgkin's lymphoma stained with SSEA-1 antibody (clone SPM490).

Description

CD15 plays a role in mediating phagocytosis, bactericidal activity, and chemotaxis. It is present on >95% of granulocytes including neutrophils and eosinophils and to a lesser degree on monocytes. In addition, CD15 is expressed in Reed-Sternberg cells and some epithelial cells. CD15 antibody is very useful in the identification of Hodgkin's disease. CD15 is occasionally expressed in large cell lymphomas of both B and T phenotypes which otherwise have a quite distinct histological appearance.

Application Notes

Optimal dilution of the SSEA-1 antibody should be determined by the researcher.

Immunogen

Myelomonocytic leukemia cells were used as the immunogen for the SSEA-1 antibody.

Storage

Store the SSEA-1 antibody at 2-8°C (with azide) or aliquot and store at -20°C or colder (without azide).