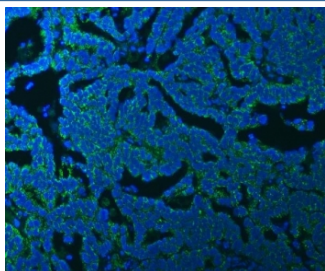


## SSBP1 Antibody / Single-stranded DNA-binding protein (RQ7903)

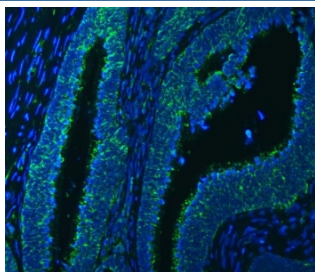
Catalog No.	Formulation	Size
RQ7903	0.5mg/ml if reconstituted with 0.2ml sterile DI water	100 ug

**Bulk quote request**

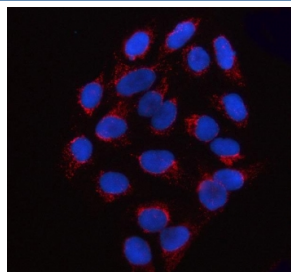
<b>Availability</b>	1-3 business days
<b>Species Reactivity</b>	Human
<b>Format</b>	Antigen affinity purified
<b>Clonality</b>	Polyclonal (rabbit origin)
<b>Isotype</b>	Rabbit IgG
<b>Purity</b>	Antigen affinity purified
<b>Buffer</b>	Lyophilized from 1X PBS with 2% Trehalose
<b>UniProt</b>	Q04837
<b>Localization</b>	Cytoplasmic
<b>Applications</b>	Western Blot : 0.5-1ug/ml Immunohistochemistry (FFPE) : 2-5ug/ml Immunofluorescence (FFPE) : 5ug/ml Flow Cytometry : 1-3ug/million cells Direct ELISA : 0.1-0.5ug/ml
<b>Limitations</b>	This SSBP1 antibody is available for research use only.



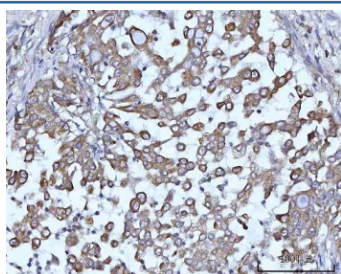
Immunofluorescent staining of FFPE human ovarian cancer tissue with SSBP1 antibody (green) and DAPI nuclear stain (blue). HIER: steam section in pH8 EDTA buffer for 20 min.



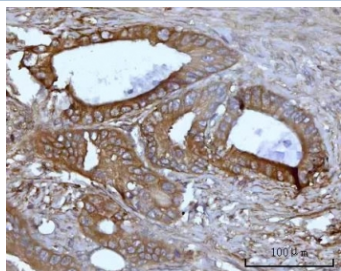
Immunofluorescent staining of FFPE human colon cancer tissue with SSBP1 antibody (green) and DAPI nuclear stain (blue). HIER: steam section in pH8 EDTA buffer for 20 min.



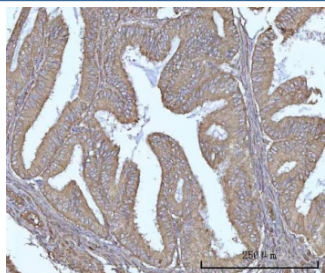
Immunofluorescent staining of FFPE human U-2 OS cells with SSBP1 antibody (red) and DAPI nuclear stain (blue). HIER: steam section in pH6 citrate buffer for 20 min.



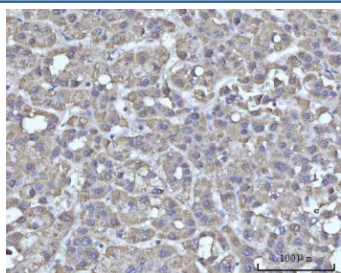
IHC staining of FFPE human lung adenocarcinoma tissue with SSBP1 antibody. HIER: boil tissue sections in pH8 EDTA for 20 min and allow to cool before testing.



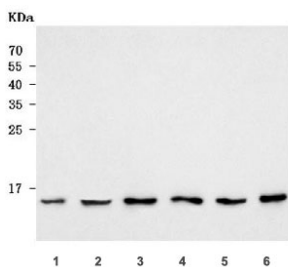
IHC staining of FFPE human colon adenocarcinoma tissue with SSBP1 antibody. HIER: boil tissue sections in pH8 EDTA for 20 min and allow to cool before testing.



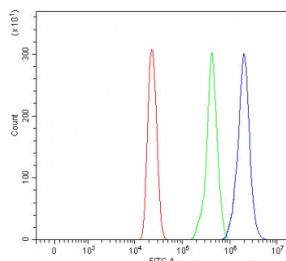
IHC staining of FFPE human endometrioid adenocarcinoma tissue with SSBP1 antibody. HIER: boil tissue sections in pH8 EDTA for 20 min and allow to cool before testing.



IHC staining of FFPE human liver cancer tissue with SSBP1 antibody. HIER: boil tissue sections in pH8 EDTA for 20 min and allow to cool before testing.



Western blot testing of human 1) HeLa, 2) 293T, 3) MOLT-4, 4) K562, 5) A549 and 6) A375 cell lysate with SSBP1 antibody. Predicted molecular weight ~17 kDa.



Flow cytometry testing of human HL60 cells with SSBP1 antibody at 1ug/million cells (blocked with goat sera); Red=cells alone, Green=isotype control, Blue= SSBP1 antibody.

## Description

Single-stranded DNA-binding protein, mitochondrial is a protein that in humans is encoded by the SSBP1 gene. SSBP1 is a housekeeping gene involved in mitochondrial biogenesis. It is also a subunit of a single-stranded DNA (ssDNA)-binding complex involved in the maintenance of genome stability.

## Application Notes

Optimal dilution of the SSBP1 antibody should be determined by the researcher.

## Immunogen

E. coli-derived recombinant human protein (amino acids M1-E148) was used as the immunogen for the SSBP1 antibody.

## Storage

After reconstitution, the SSBP1 antibody can be stored for up to one month at 4°C. For long-term, aliquot and store at -20°C. Avoid repeated freezing and thawing.