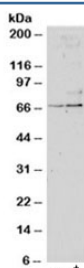


## SRF Antibody (R35203)

Catalog No.	Formulation	Size
R35203-100UG	0.5 mg/ml in 1X TBS, pH7.3, with 0.5% BSA (US sourced) and 0.02% sodium azide	100 ug

[Bulk quote request](#)

Availability	1-3 business days
Species Reactivity	Human
Predicted Reactivity	Cow, Dog, Mouse
Format	Antigen affinity purified
Clonality	Polyclonal (goat origin)
Isotype	Goat Ig
Purity	Antigen affinity
Gene ID	6722
Applications	Western Blot : 1-3ug/ml ELISA (peptide) LOD : 1:32000
Limitations	This SRF antibody is available for research use only.



Western blot testing of untreated (left) and TGFBI-treated (right, 1ng/ml, 24hr) primary cultured human lung fibroblasts with SRF antibody at 1ug/ml. Predicted molecular weight: ~52/60-70kDa (unmodified/phosphorylated).

## Description

Additional name(s) for this target protein: Serum response factor

## Application Notes

Optimal dilution of the SRF antibody should be determined by the researcher.

## Immunogen

Amino acids QASPSRDSSTDLTQ were used as the immunogen for this SRF antibody.

## Storage

Aliquot and store the SRF antibody at -20oC.