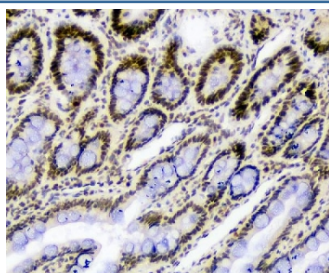


Splicing factor 1 Antibody / SF1 (R30963)

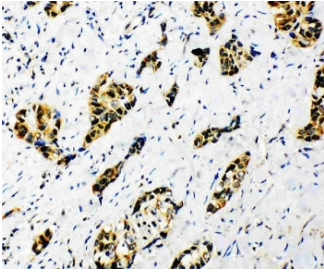
Catalog No.	Formulation	Size
R30963	0.5mg/ml if reconstituted with 0.2ml sterile DI water	100 ug

Bulk quote request

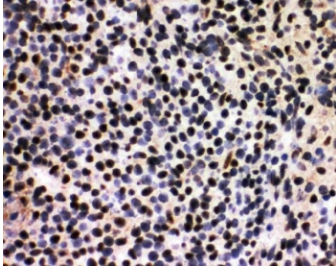
Availability	1-3 business days
Species Reactivity	Human, Mouse, Rat
Format	Antigen affinity purified
Clonality	Polyclonal (rabbit origin)
Isotype	Rabbit IgG
Purity	Antigen affinity
Buffer	Lyophilized from 1X PBS with 2.5% BSA and 0.025% sodium azide/thimerosal
UniProt	Q15637
Localization	Nuclear
Applications	Western Blot : 0.5-1ug/ml Immunohistochemistry (FFPE) : 0.5-1ug/ml Immunocytochemistry : 0.5-1ug/ml Immunofluorescence : 5ug/ml Flow Cytometry : 1-3ug/million cells
Limitations	This Splicing factor 1 antibody is available for research use only.



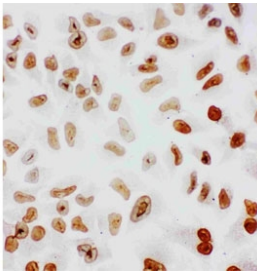
IHC staining of FFPE rat small intestine tissue with Splicing factor 1 antibody. HIER: boil tissue sections in pH6 citrate buffer for 20 min and allow to cool before testing.



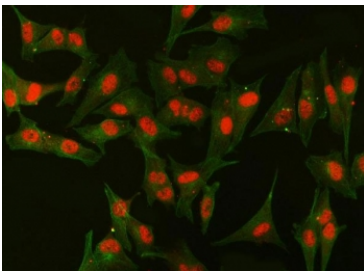
IHC staining of FFPE human lung cancer tissue with Splicing factor 1 antibody. HIER: boil tissue sections in pH8 EDTA for 20 min and allow to cool before testing.



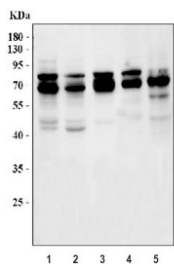
IHC staining of frozen rat spleen tissue with Splicing factor 1 antibody.



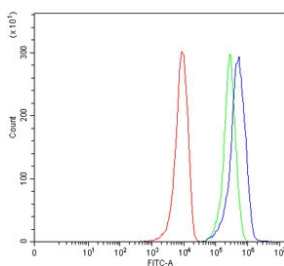
Immunocytochemical staining of FFPE human HeLa cells with Splicing factor 1 antibody. HIER: boil tissue sections in pH6 citrate buffer for 20 min and allow to cool before testing.



Immunofluorescent staining of FFPE human U-87 MG cells with Splicing factor 1 antibody (red). HIER: steam section in pH6 citrate buffer for 20 min.



Western blot testing of 1) human K562, 2) human A549, 3) human ThP-1, 4) rat PC-12 and 5) mouse RAW264.7 cell lysate with Splicing factor 1 antibody. Predicted molecular weight ~68 kDa (multiple isoforms).



Flow cytometry testing of human 293T cells with Splicing factor 1 antibody at 1ug/million cells (blocked with goat sera); Red=cells alone, Green=isotype control, Blue= Splicing factor 1 antibody.

Description

Splicing factor 1, also known as sSF1, Zinc finger protein 162 (ZNF162), ZFM162, Transcription factor ZFM1, and Mammalian branch point-binding protein (BBP or mBBP), is a protein that in humans is encoded by the SF1 gene. It is predicted 623-amino acid protein. RT-PCR was used to show expression in the thyroid gland, pancreas, adrenal gland, and ovary. All of the isoforms contain a KH domain, a sequence motif present in proteins playing a major role in regulating cellular RNA metabolism.

Application Notes

The stated application concentrations are suggested starting amounts. Titration of the Splicing factor 1 antibody may be required due to differences in protocols and secondary/substrate sensitivity.

Immunogen

An amino acid sequence from the N-terminus of human Splicing factor 1 (DFPSKKRKRSRWNQDTMEQK) was used as the immunogen for this Splicing factor 1 antibody (100% homologous in human, mouse and rat).

Storage

After reconstitution, the Splicing factor 1 antibody can be stored for up to one month at 4°C. For long-term, aliquot and store at -20°C. Avoid repeated freezing and thawing.