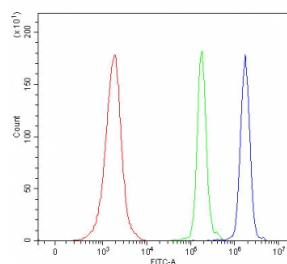


Spermine synthase Antibody / SMS (RQ7727)

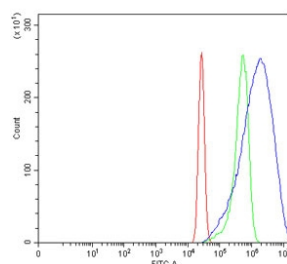
Catalog No.	Formulation	Size
RQ7727	0.5mg/ml if reconstituted with 0.2ml sterile DI water	100 ug

Bulk quote request

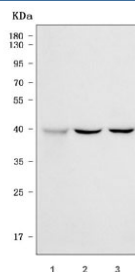
Availability	1-3 business days
Species Reactivity	Human
Format	Antigen affinity purified
Clonality	Polyclonal (rabbit origin)
Isotype	Rabbit IgG
Purity	Antigen affinity purified
Buffer	Lyophilized from 1X PBS with 2% Trehalose
UniProt	P52788
Applications	Western Blot : 0.5-1ug/ml Flow Cytometry : 1-3ug/million cells Direct ELISA : 0.1-0.5ug/ml
Limitations	This Spermine synthase antibody is available for research use only.



Flow cytometry testing of human JK cells with Spermine synthase antibody at 1ug/million cells (blocked with goat sera); Red=cells alone, Green=isotype control, Blue= Spermine synthase antibody.



Flow cytometry testing of human A431 cells with Spermine synthase antibody at 1ug/million cells (blocked with goat sera); Red=cells alone, Green=isotype control, Blue= Spermine synthase antibody.



Western blot testing of human 1) U-87 MG, 2) U-251 and 3) K562 cell lysate with Spermine synthase antibody. Predicted molecular weight ~41 kDa.

Description

This gene encodes a protein belonging to the spermidine/spermine synthase family and catalyzes the production of spermine from spermidine. Pseudogenes of this gene are located on chromosomes 1, 5, 6 and X. Mutations in this gene cause an X-linked intellectual disability called Snyder-Robinson Syndrome (SRS). Multiple transcript variants encoding different isoforms have been found for this gene.

Application Notes

Optimal dilution of the Spermine synthase antibody should be determined by the researcher.

Immunogen

E. coli-derived recombinant human protein (amino acids Q102-K365) was used as the immunogen for the Spermine synthase antibody.

Storage

After reconstitution, the Spermine synthase antibody can be stored for up to one month at 4oC. For long-term, aliquot and store at -20oC. Avoid repeated freezing and thawing.