

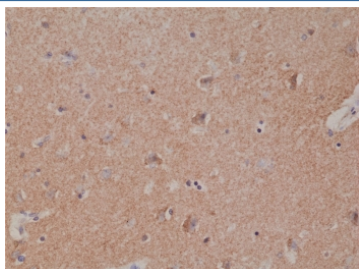
Spastin Antibody [clone RM346] (R20368)

Catalog No.	Formulation	Size
R20368-0.1ML	Antibody in PBS with 50% glycerol, 1% BSA and 0.09% sodium azide	100 ul

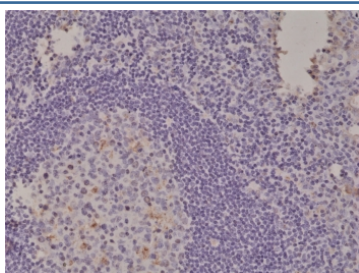
Recombinant **RABBIT MONOCLONAL**

[Bulk quote request](#)

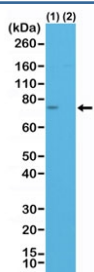
Availability	1-3 business days
Species Reactivity	Human
Format	Purified
Clonality	Recombinant Rabbit Monoclonal
Isotype	Rabbit IgG
Clone Name	RM346
Purity	Protein A purified from animal origin-free supernatant
UniProt	Q9UBP0
Localization	Cytoplasmic, nuclear
Applications	Immunohistochemistry (FFPE) : 1:500-1:1000 Western Blot : 1:500-1:1000
Limitations	This recombinant Spastin antibody is available for research use only.



IHC staining of FFPE human brain tissue with recombinant Spastin antibody at 1:1000.



IHC staining of FFPE human tonsil tissue with recombinant Spastin antibody at 1:1000.



Western blot testing of lysate from human HeLa cells transfected with control siRNA (1) or Spastin siRNA, using recombinant Spastin antibody at 1:500.

Description

This antibody reacts to human Spastin.

Application Notes

The stated application concentrations are suggested starting points. Titration of the recombinant Spastin antibody may be required due to differences in protocols and secondary/substrate sensitivity.

Immunogen

A peptide corresponding to the N-terminus of human Spastin was used as the immunogen for the recombinant Spastin antibody.

Storage

Store the recombinant Spastin antibody at -20oC.