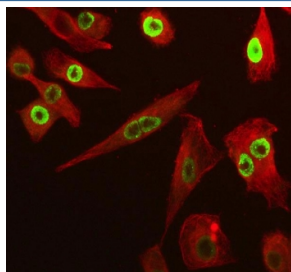


SP6 Antibody / Transcription factor Sp6 / KLF14 (RQ4149)

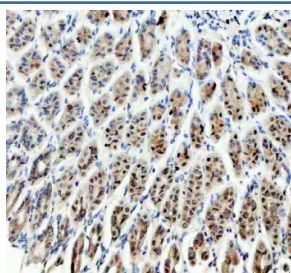
Catalog No.	Formulation	Size
RQ4149	0.5mg/ml if reconstituted with 0.2ml sterile DI water	100 ug

Bulk quote request

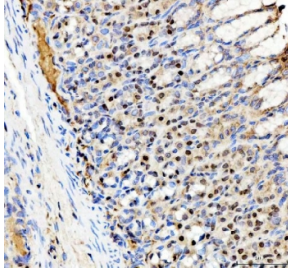
Availability	1-3 business days
Species Reactivity	Human, Mouse, Rat
Format	Antigen affinity purified
Clonality	Polyclonal (rabbit origin)
Isotype	Rabbit IgG
Purity	Antigen affinity purified
Buffer	Lyophilized from 1X PBS with 2% Trehalose
UniProt	Q3SY56
Localization	Nuclear
Applications	Western Blot : 0.5-1ug/ml Immunohistochemistry (FFPE) : 2-5ug/ml Immunofluorescence : 5ug/ml
Limitations	This SP6 antibody is available for research use only.



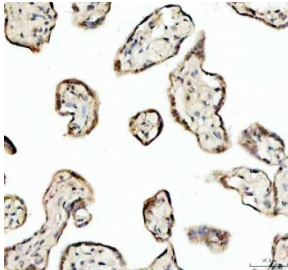
Immunofluorescent staining of FFPE human A549 cells with SP6 antibody (green) and Beta Tubulin mAb (red). HIER: steam section in pH6 citrate buffer for 20 min.



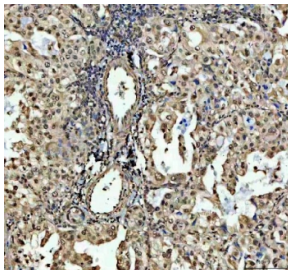
IHC staining of FFPE mouse stomach tissue with SP6 antibody. HIER: boil tissue sections in pH8 EDTA for 20 min and allow to cool before testing.



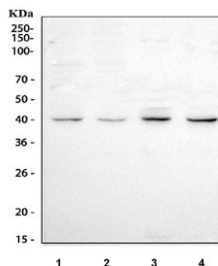
IHC staining of FFPE rat stomach tissue with SP6 antibody. HIER: boil tissue sections in pH8 EDTA for 20 min and allow to cool before testing.



IHC staining of FFPE human placental tissue with SP6 antibody. HIER: boil tissue sections in pH8 EDTA for 20 min and allow to cool before testing.



IHC staining of FFPE human lung cancer tissue with SP6 antibody. HIER: boil tissue sections in pH8 EDTA for 20 min and allow to cool before testing.



Western blot testing of human 1) Caco-2, 2) RT4, 3) A431 and 4) K562 cell lysate with SP6 antibody. Predicted molecular weight ~40 kDa.

Description

SP6 belongs to a family of transcription factors that contain 3 classical zinc finger DNA-binding domains consisting of a zinc atom tetrahedrally coordinated by 2 cysteines and 2 histidines (C2H2 motif). These transcription factors bind to GC-rich sequences and related GT and CACCC boxes. By somatic cell hybrid analysis and FISH, the SP6 gene is mapped to chromosome 17q21.3-q22.

Application Notes

Optimal dilution of the SP6 antibody should be determined by the researcher.

Immunogen

Amino acids QPDMSHHYESWFRPTHPGAEDGSWWDLHPGTSWMDLPH from the human protein were used as the immunogen for the SP6 antibody.

Storage

After reconstitution, the SP6 antibody can be stored for up to one month at 4°C. For long-term, aliquot and store at -20°C. Avoid repeated freezing and thawing.

