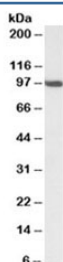


Sp1 Antibody (R33454)

Catalog No.	Formulation	Size
R33454-100UG	0.5 mg/ml in 1X TBS, pH7.3, with 0.5% BSA (US sourced) and 0.02% sodium azide	100 ug

[Bulk quote request](#)

Availability	1-3 business days
Species Reactivity	Mouse
Predicted Reactivity	Pig, Rat
Format	Antigen affinity purified
Clonality	Polyclonal (goat origin)
Isotype	Goat Ig
Purity	Antigen affinity
Gene ID	20683
Applications	Western Blot : 0.3-1ug/ml ELISA (peptide) LOD : 1:8000
Limitations	This Sp1 antibody is available for research use only.



Western blot testing of NIH3T3 nuclear lysate with Sp1 antibody at 0.3ug/ml. Predicted molecular weight ~81kDa but routinely observed at ~95kDa.

Description

Additional name(s) for this target protein: Specificity protein 1; Transcription factor Sp1

Application Notes

Optimal dilution of the Sp1 antibody should be determined by the researcher.

Immunogen

Amino acids DGIHDETAGGEGEN were used as the immunogen for this Sp1 antibody.

Storage

Aliquot and store the Sp1 antibody at -20oC.