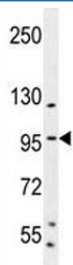


SP1 Antibody (F41459)

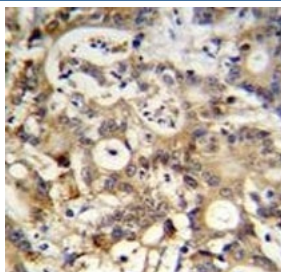
Catalog No.	Formulation	Size
F41459-0.4ML	In 1X PBS, pH 7.4, with 0.09% sodium azide	0.4 ml
F41459-0.08ML	In 1X PBS, pH 7.4, with 0.09% sodium azide	0.08 ml

[Bulk quote request](#)

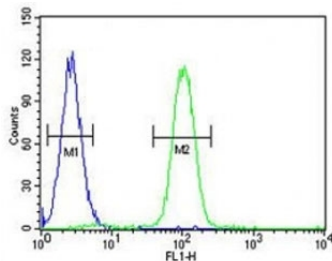
Availability	1-3 business days
Species Reactivity	Human
Predicted Reactivity	Mouse, Rat
Format	Antigen affinity purified
Clonality	Polyclonal (rabbit origin)
Isotype	Rabbit Ig
Purity	Antigen affinity
UniProt	P08047
Applications	Western Blot : 1:1000 IHC (Paraffin) : 1:50-1:100 Flow Cytometry : 1:10-1:50 Immunofluorescence : 1:10-1:50
Limitations	This SP1 antibody is available for research use only.



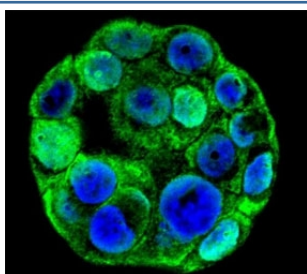
SP1 antibody western blot analysis in K562 lysate. Reported molecular weight: 81-95 kDa



SP1 antibody immunohistochemistry analysis in formalin fixed and paraffin embedded human colon carcinoma.



SP1 antibody flow cytometric analysis of K562 cells (right histogram) compared to a negative control (left histogram). FITC-conjugated goat-anti-rabbit secondary Ab was used for the analysis.



Confocal immunofluorescent analysis of SP1 antibody with WiDr cells followed by Alexa Fluor 488-conjugated goat anti-rabbit IgG (green). DAPI was used as a nuclear counterstain (blue).

Description

Transcription factor that can activate or repress transcription in response to physiological and pathological stimuli. Binds with high affinity to GC-rich motifs and regulates the expression of a large number of genes involved in a variety of processes such as cell growth, apoptosis, differentiation and immune responses. Highly regulated by post-translational modifications (phosphorylations, sumoylation, proteolytic cleavage, glycosylation and acetylation). Binds also the PDGFR-alpha G-box promoter. May have a role in modulating the cellular response to DNA damage. Implicated in chromatin remodeling. Plays a role in the recruitment of SMARCA4/BRG1 on the c-FOS promoter. Plays an essential role in the regulation of FE65 gene expression. [UniProt]

Application Notes

Titration of the SP1 antibody may be required due to differences in protocols and secondary/substrate sensitivity.

Immunogen

A portion of amino acids 677-707 from the human protein was used as the immunogen for this SP1 antibody.

Storage

Aliquot the SP1 antibody and store frozen at -20oC or colder. Avoid repeated freeze-thaw cycles.

