

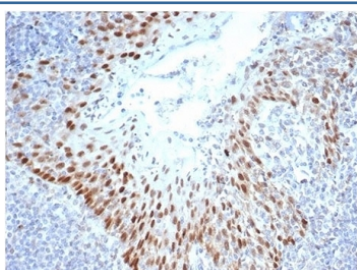
## SOX2 Antibody [clone SOX2/4267R] (V9634)

Catalog No.	Formulation	Size
V9634-100UG	0.2 mg/ml in 1X PBS with 0.1 mg/ml BSA (US sourced), 0.05% sodium azide	100 ug
V9634-20UG	0.2 mg/ml in 1X PBS with 0.1 mg/ml BSA (US sourced), 0.05% sodium azide	20 ug
V9634SAF-100UG	1 mg/ml in 1X PBS; BSA free, sodium azide free	100 ug

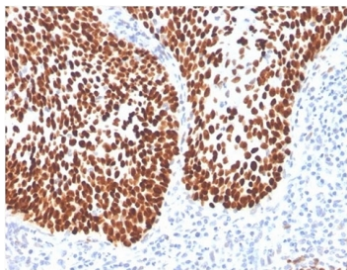
Recombinant **RABBIT MONOCLONAL**

[Bulk quote request](#)

<b>Availability</b>	1-3 business days
<b>Species Reactivity</b>	Human
<b>Format</b>	Purified
<b>Clonality</b>	Recombinant Rabbit Monoclonal
<b>Isotype</b>	Rabbit IgG
<b>Clone Name</b>	SOX2/4267R
<b>Purity</b>	Protein A/G affinity
<b>UniProt</b>	P48431
<b>Localization</b>	Nucleus
<b>Applications</b>	Immunohistochemistry (FFPE) : 1-2ug/ml
<b>Limitations</b>	This SOX2 antibody is available for research use only.



IHC staining of FFPE human tonsil tissue with SOX2 antibody (clone SOX2/4267R) at 2ug/ml in PBS for 30min RT. Strong nuclear staining observed. HIER: boil tissue sections in pH 9 10mM Tris with 1mM EDTA for 20 min and allow to cool before testing.



IHC staining of FFPE human cervical tissue with SOX2 antibody (clone SOX2/4267R) at 2ug/ml in PBS for 30min RT. HIER: boil tissue sections in pH 9 10mM Tris with 1mM EDTA for 20 min and allow to cool before testing.

## Description

SOX2 is required for stem cell maintenance in the central nervous system, and it also regulates gene expression in the stomach. SOX2 is necessary for regulating multiple transcription factors that affect Oct 3/4 expression. An essential function of SOX2 is to stabilize embryonic stem cells in a pluripotent state by maintaining the requisite level of Oct 3/4 expression. Reportedly, SOX2 is associated with aggressive phenotypes of breast, head and neck, gastric, colorectal, bladder, and small cell lung cancers. However, SOX2 is expressed in a high percentage of lung squamous cell carcinomas and has been shown to be an independent favorable prognostic marker.

## Application Notes

Optimal dilution of the SOX2 antibody should be determined by the researcher.

## Immunogen

A recombinant fragment of human SOX2 protein was used as the immunogen for the SOX2 antibody.

## Storage

Aliquot the SOX2 antibody and store frozen at -20oC or colder. Avoid repeated freeze-thaw cycles.