

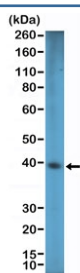
SOX2 Antibody [clone RM427] (R20441)

Catalog No.	Formulation	Size
R20441-0.1ML	Antibody in PBS with 50% glycerol, 1% BSA and 0.09% sodium azide	100 ul

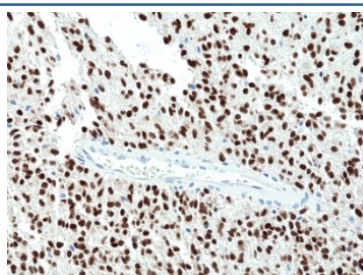
Recombinant **RABBIT MONOCLONAL**

[Bulk quote request](#)

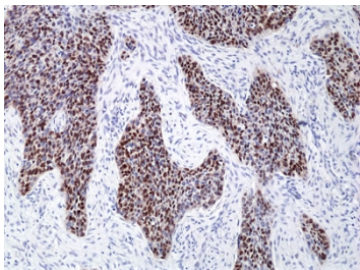
Availability	1-3 business days
Species Reactivity	Human
Format	Purified
Clonality	Recombinant Rabbit Monoclonal
Isotype	Rabbit IgG
Clone Name	RM427
Purity	Protein A purified from animal origin-free supernatant
UniProt	P48431
Localization	Cytoplasmic, nuclear
Applications	Immunohistochemistry (FFPE) : 1:50-1:100 Western Blot : 1:1000-1:2000
Limitations	This recombinant SOX2 antibody is available for research use only.



Western blot testing of human HEK293 cell lysate with recombinant SOX2 antibody at 1:1000 dilution. Predicted molecular weight ~34 kDa.



IHC staining of FFPE human glioblastoma tissue with recombinant SOX2 antibody at 1:100.



IHC staining of FFPE human lung squamous cell carcinoma tissue with recombinant SOX2 antibody at 1:100.

Description

This antibody reacts to human Sox2.

Application Notes

The stated application concentrations are suggested starting points. Titration of the recombinant SOX2 antibody may be required due to differences in protocols and secondary/substrate sensitivity.

Immunogen

A peptide corresponding to the C-terminus of human SOX2 was used as the immunogen for the recombinant SOX2 antibody.

Storage

Store the recombinant SOX2 antibody at -20oC.