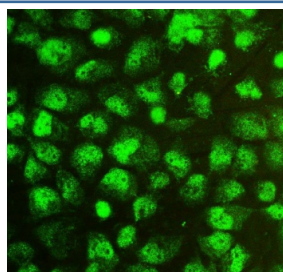


SOX15 Antibody (RQ5453)

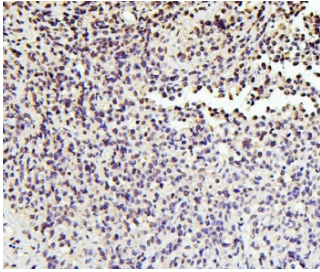
Catalog No.	Formulation	Size
RQ5453	0.5mg/ml if reconstituted with 0.2ml sterile DI water	100 ug

Bulk quote request

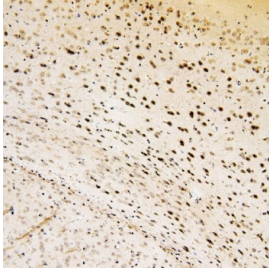
Availability	1-3 business days
Species Reactivity	Human, Mouse, Rat
Format	Antigen affinity purified
Clonality	Polyclonal (rabbit origin)
Isotype	Rabbit IgG
Purity	Affinity purified
Buffer	Lyophilized from 1X PBS with 2% Trehalose and 0.025% sodium azide
UniProt	O60248
Localization	Nuclear
Applications	Western Blot : 0.1-0.5ug/ml Immunohistochemistry (FFPE) : 0.5-1ug/ml Immunocytochemistry/Immunofluorescence : 2-4ug/ml Direct ELISA : 0.1-0.5ug/ml
Limitations	This SOX15 antibody is available for research use only.



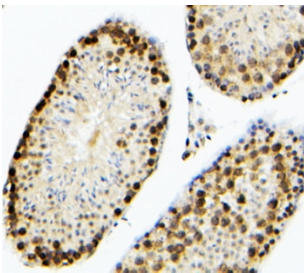
IF/ICC staining of FFPE human A431 cells with SOX15 antibody at 2ug/ml. HIER: steam section in pH6 citrate buffer for 20 min.



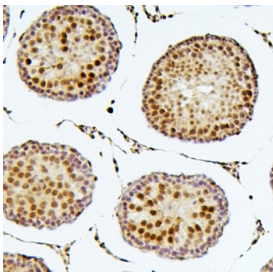
IHC staining of FFPE human testis cancer with SOX15 antibody. HIER: boil tissue sections in pH6, 10mM citrate buffer, for 20 min and allow to cool before testing.



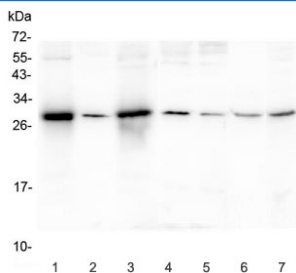
IHC staining of FFPE mouse brain with SOX15 antibody. HIER: boil tissue sections in pH6, 10mM citrate buffer, for 20 min and allow to cool before testing.



IHC staining of FFPE mouse testis with SOX15 antibody. HIER: boil tissue sections in pH6, 10mM citrate buffer, for 20 min and allow to cool before testing.



IHC staining of FFPE rat testis with SOX15 antibody. HIER: boil tissue sections in pH6, 10mM citrate buffer, for 20 min and allow to cool before testing.



Western blot testing of human 1) A431, 2) U-87 MG, 3) HEK293, 4) K562, 5) U-2 OS, 6) rat thymus and 7) mouse SP20 lysate with SOX15 antibody. Predicted molecular weight ~25 kDa.

Description

Protein SOX-15 is a protein that in humans is encoded by the SOX15 gene. This gene encodes a member of the SOX (SRY-related HMG-box) family of transcription factors involved in the regulation of embryonic development and in the determination of the cell fate. The encoded protein may act as a transcriptional regulator after forming a protein complex with other proteins.

Application Notes

Optimal dilution of the SOX15 antibody should be determined by the researcher.

Immunogen

Amino acids M1-L233 from the human protein were used as the immunogen for the SOX15 antibody.

Storage

Store the SOX15 antibody at -20oC.