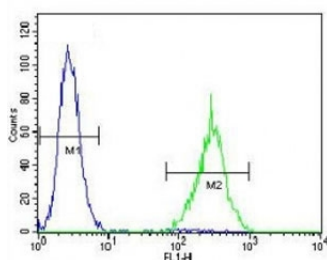


## SOX1 Antibody (F41674)

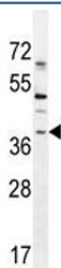
Catalog No.	Formulation	Size
F41674-0.4ML	In 1X PBS, pH 7.4, with 0.09% sodium azide	0.4 ml
F41674-0.08ML	In 1X PBS, pH 7.4, with 0.09% sodium azide	0.08 ml

**Bulk quote request**

<b>Availability</b>	1-3 business days
<b>Species Reactivity</b>	Human
<b>Predicted Reactivity</b>	Mouse, Primate, Chicken, Zebrafish, Xenopus
<b>Format</b>	Purified
<b>Clonality</b>	Polyclonal (rabbit origin)
<b>Isotype</b>	Rabbit Ig
<b>Purity</b>	Purified
<b>UniProt</b>	O00570
<b>Applications</b>	Western Blot : 1:1000 Flow Cytometry : 1:10-1:50
<b>Limitations</b>	This SOX1 antibody is available for research use only.



SOX1 antibody flow cytometric analysis of NCI-H460 cells (right histogram) compared to a negative control (left histogram). FITC-conjugated goat-anti-rabbit secondary Ab was used for the analysis.



SOX1 antibody western blot analysis in NCI-H460 lysate.

## Description

This intronless gene encodes a member of the SOX (SRY-related HMG-box) family of transcription factors involved in the regulation of embryonic development and in the determination of the cell fate. The encoded protein may act as a transcriptional activator after forming a protein complex with other proteins. In mice, a similar protein regulates the gamma-crystallin genes and is essential for lens development.

## Application Notes

Titration of the SOX1 antibody may be required due to differences in protocols and secondary/substrate sensitivity.

## Immunogen

A portion of amino acids 47-76 from the human protein was used as the immunogen for this SOX1 antibody.

## Storage

Aliquot the SOX1 antibody and store frozen at -20oC or colder. Avoid repeated freeze-thaw cycles.