

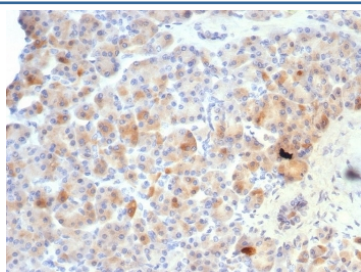
## Somatostatin Antibody / Neuronostatin [clone SST/7200R] (V5022)

Catalog No.	Formulation	Size
V5022-100UG	0.2 mg/ml in 1X PBS with 0.1 mg/ml BSA (US sourced), 0.05% sodium azide	100 ug
V5022-20UG	0.2 mg/ml in 1X PBS with 0.1 mg/ml BSA (US sourced), 0.05% sodium azide	20 ug
V5022SAF-100UG	1 mg/ml in 1X PBS; BSA free, sodium azide free	100 ug

Recombinant **RABBIT MONOCLONAL**

[Bulk quote request](#)

<b>Availability</b>	1-3 business days
<b>Species Reactivity</b>	Human
<b>Format</b>	Purified
<b>Clonality</b>	Recombinant Rabbit Monoclonal
<b>Isotype</b>	Rabbit IgG, kappa
<b>Clone Name</b>	SST/7200R
<b>Purity</b>	Protein A/G affinity
<b>UniProt</b>	P61278
<b>Localization</b>	Secreted
<b>Applications</b>	Immunohistochemistry (FFPE) : 1-2ug/ml for 30 min at RT
<b>Limitations</b>	This Somatostatin antibody is available for research use only.



IHC staining of FFPE human pancreas tissue with Somatostatin antibody (clone SST/7200R). HIER: boil tissue sections in pH 9 10mM Tris with 1mM EDTA for 20 min and allow to cool before testing.

## Description

Somatostatin is a regulatory hormone that is expressed throughout the body and inhibits the release of numerous secondary hormones by binding to highaffinity G protein-coupled somatostatin receptors. This cyclic tetradecapeptide inhibits the secretion of many important hormones, including somatotropin (also designated growth hormone, or GH), Insulin and glucagon. Somatostatin is found in both the hypothalamus and pancreas. Somatostatin is thought to be

involved in the regulation of Insulin synthesis. The hormone somatostatin has active 14 amino acid and 28 amino acid forms that are produced by alternate cleavage of the single preproprotein encoded by this gene. In the cerebellum, Somatostatin-14 and Somatostatin-28 are highly expressed at birth and in the adult stage, respectively. Somatostatin affects rates of neurotransmission in the central nervous system and proliferation of both normal and tumorigenic cells. The gene encoding Somatostatin maps to human chromosome 3q27.3.

## **Application Notes**

Optimal dilution of the Somatostatin antibody should be determined by the researcher.

## **Immunogen**

A recombinant fragment of human protein was used as the immunogen for the Somatostatin antibody.

## **Storage**

Aliquot the Somatostatin antibody and store frozen at -20oC or colder. Avoid repeated freeze-thaw cycles.