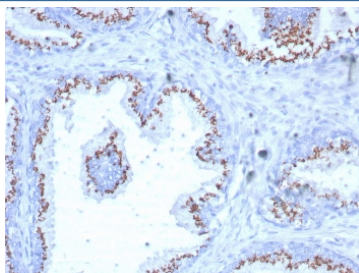


Solute carrier family 45 member 3 Antibody / SLC45A3 / Prostein [clone SLC45A3/7649] (V4786)

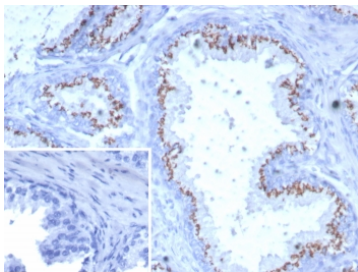
Catalog No.	Formulation	Size
V4786-100UG	0.2 mg/ml in 1X PBS with 0.1 mg/ml BSA (US sourced), 0.05% sodium azide	100 ug
V4786-20UG	0.2 mg/ml in 1X PBS with 0.1 mg/ml BSA (US sourced), 0.05% sodium azide	20 ug
V4786SAF-100UG	1 mg/ml in 1X PBS; BSA free, sodium azide free	100 ug

Bulk quote request

Availability	1-3 business days
Species Reactivity	Human
Format	Purified
Clonality	Monoclonal (mouse origin)
Isotype	Mouse IgG1, kappa
Clone Name	SLC45A3/7649
Purity	Protein A/G affinity
UniProt	Q96JT2
Localization	Membrane
Applications	Immunohistochemistry (FFPE) : 1-2ug/ml for 30 min at RT
Limitations	This Solute carrier family 45 member 3 antibody is available for research use only.



IHC staining of FFPE human prostate tissue with Solute carrier family 45 member 3 antibody (clone SLC45A3/7649). HIER: boil tissue sections in pH 9 10mM Tris with 1mM EDTA for 20 min and allow to cool before testing.



IHC staining of FFPE human prostate tissue with Solute carrier family 45 member 3 antibody (clone SLC45A3/7649). Inset: PBS used in place of primary Ab (secondary Ab negative control). HIER: boil tissue sections in pH 9 10mM Tris with 1mM EDTA for 20 min and allow to cool before testing.

Description

Human prostein is a 553 aa protein identified by cDNA library subtraction and subsequent high-throughput microarray screening of prostate cancer. Prostein has multiple transmembrane domains. Prostein has been shown to be uniquely expressed in normal and cancerous prostatic tissues. By immunohistochemistry, prostein is expressed in the vast majority of normal and malignant prostatic tissues, regardless of grade and metastatic status. No protein expression is detected in normal and malignant tissue samples representing the great majority of essential tissues and tumors. In particular, prostein is expressed in most of poorly differentiated prostatic carcinoma, including small cell prostate carcinoma. Prostein is more specific and sensitive for prostatic carcinomas than PSA and PSAP.

Application Notes

Optimal dilution of the Solute carrier family 45 member 3 antibody should be determined by the researcher.

Immunogen

A recombinant partial protein sequence (within amino acids 300-500) from the human protein was used as the immunogen for the Solute carrier family 45 member 3 antibody.

Storage

Aliquot the Solute carrier family 45 member 3 antibody and store frozen at -20°C or colder. Avoid repeated freeze-thaw cycles.