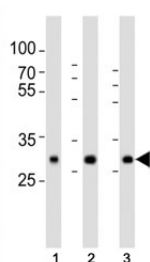


## SOD3 Antibody (F52953)

Catalog No.	Formulation	Size
F52953-0.4ML	In 1X PBS, pH 7.4, with 0.09% sodium azide	0.4 ml
F52953-0.08ML	In 1X PBS, pH 7.4, with 0.09% sodium azide	0.08 ml

[Bulk quote request](#)

<b>Availability</b>	1-3 business days
<b>Species Reactivity</b>	Human
<b>Format</b>	Antigen affinity purified
<b>Clonality</b>	Polyclonal (rabbit origin)
<b>Isotype</b>	Rabbit Ig
<b>Purity</b>	Antigen affinity
<b>UniProt</b>	P08294
<b>Localization</b>	Cytoplasm, extracellular matrix
<b>Applications</b>	Western Blot : 1:500-1:1000
<b>Limitations</b>	This SOD3 antibody is available for research use only.



Western blot analysis of lysate from human (1) placenta, (2) lung, (3) kidney tissue lysate using SOD3 antibody at 1:1000. Predicted molecular weight: 26~32 kDa.

## Description

SOD3 protect the extracellular space from toxic effect of reactive oxygen intermediates by converting superoxide radicals into hydrogen peroxide and oxygen.

## Application Notes

Titration of the SOD3 antibody may be required due to differences in protocols and secondary/substrate sensitivity.

## Immunogen

This SOD3 antibody was produced from a rabbit immunized with a KLH conjugated synthetic peptide between 186-219 amino acids from the C-terminal region of human SOD3.

## **Storage**

Aliquot the SOD3 antibody and store frozen at -20oC or colder. Avoid repeated freeze-thaw cycles.