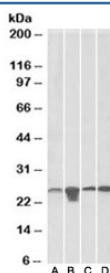


SOD2 Antibody (R33703)

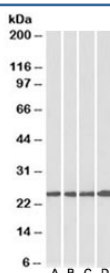
| Catalog No. | Formulation | Size |
|--------------|---|--------|
| R33703-100UG | 0.5 mg/ml in 1X TBS, pH7.3, with 0.5% BSA (US sourced) and 0.02% sodium azide | 100 ug |

[Bulk quote request](#)

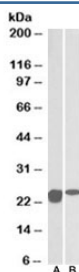
| | |
|----------------------|--|
| Availability | 1-3 business days |
| Species Reactivity | Human, Mouse, Rat, Pig |
| Predicted Reactivity | Cow, Dog, Zebrafish |
| Format | Antigen affinity purified |
| Clonality | Polyclonal (goat origin) |
| Isotype | Goat Ig |
| Purity | Antigen affinity |
| Gene ID | 6648 |
| Applications | Western Blot : 0.1-1ug/ml ELISA (peptide) LOD : 1:64000 |
| Limitations | This SOD2 antibody is available for research use only. |



Western blot testing of A) HeLa, B) HepG2, C) HEK293 and D) mouse NIH3T3 lysate with SOD2 antibody at 0.1ug/ml. Predicted molecular weight ~25kDa.



Western blot of human cerebellum (A), mouse brain (B), rat brain (C) and pig brain (D) lysates with SOD2 antibody at 0.3ug/ml. Predicted molecular weight ~25kDa.



Western blot of mouse (A) and rat (B) spinal cord lysates with SOD2 antibody at 0.01ug/ml. Predicted molecular weight ~25kDa.

Description

Additional name(s) for this target protein: Superoxide dismutase 2

Application Notes

Optimal dilution of the SOD2 antibody should be determined by the researcher.

Immunogen

Amino acids EAIKRDFGSFDK were used as the immunogen for this SOD2 antibody. The amino acid sequence used as immunogen is from the SOD2 acetylation site.

Storage

Aliquot and store the SOD2 antibody at -20oC.