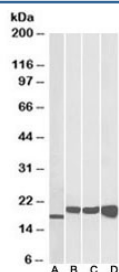


## SOD Antibody (R36046)

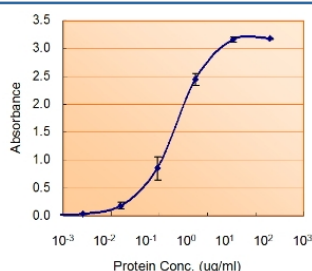
Catalog No.	Formulation	Size
R36046-100UG	0.5 mg/ml in 1X TBS, pH7.3, with 0.5% BSA (US sourced) and 0.02% sodium azide	100 ug

[Bulk quote request](#)

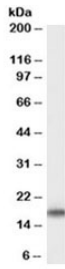
Availability	1-3 business days
Species Reactivity	Human, Mouse, Rat
Predicted Reactivity	Dog
Format	Antigen affinity purified
Clonality	Polyclonal (goat origin)
Isotype	Goat Ig
Purity	Antigen affinity
Gene ID	6647
Applications	Western Blot : 0.02-0.1ug/ml Enzyme ImmunoAssay : binds recombinant protein (use at 1-2ug/ml) ELISA (peptide) LOD : 1:8000
Limitations	This SOD antibody is available for research use only.



Western blot of mouse NIH3T3 (A), and human HEK293 (B), HepG2 (C) and MCF7 (D) lysates with SOD antibody at 0.01ug/ml. Predicted molecular weight: ~16kDa.



Sandwich ELISA of SOD antibody used as detect at 1.5ug/ml.



Western blot testing of mouse brain lysate with SOD antibody at 0.02ug/ml. Predicted molecular weight: ~16kDa.

## Description

Additional name(s) for this target protein: Superoxide dismutase 1, SOD1

## Application Notes

Optimal dilution of the SOD antibody should be determined by the researcher.

## Immunogen

Amino acids SRKHGGPKDEERH were used as the immunogen for this SOD antibody.

## Storage

Aliquot and store the SOD antibody at -20oC.