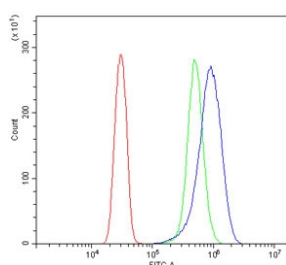


## SOCS3 Antibody (RQ6156)

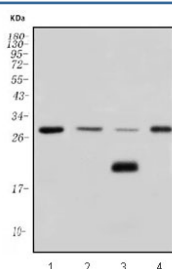
Catalog No.	Formulation	Size
RQ6156	0.5mg/ml if reconstituted with 0.2ml sterile DI water	100 ug

**Bulk quote request**

<b>Availability</b>	1-3 business days
<b>Species Reactivity</b>	Human, Mouse, Rat
<b>Format</b>	Antigen affinity purified
<b>Clonality</b>	Polyclonal (rabbit origin)
<b>Isotype</b>	Rabbit IgG
<b>Purity</b>	Affinity purified
<b>Buffer</b>	Lyophilized from 1X PBS with 2% Trehalose and 0.025% sodium azide
<b>UniProt</b>	O14543
<b>Applications</b>	Western Blot : 1-2ug/ml Flow Cytometry : 1-3ug/million cells Direct ELISA : 0.1-0.5ug/ml
<b>Limitations</b>	This SOCS3 antibody is available for research use only.



Flow cytometry testing of human SiHa cells with SOCS3 antibody at 1ug/million cells (blocked with goat sera); Red=cells alone, Green=isotype control, Blue= SOCS3 antibody.



Western blot testing of 1) human HeLa, 2) rat heart, 3) rat skeletal muscle and 4) mouse heart lysate with SOCS3 antibody. Predicted molecular weight ~24 kDa.

## Description

SOCS3 (Suppressor of cytokine signaling 3) is a protein that in humans is encoded by the SOCS3 gene. SOCS3 is transiently expressed by multiple cell lineages within the immune system and functions predominantly as a negative regulator of cytokines that activate the JAK-STAT3 pathway. This gene encodes a member of the STAT-induced STAT inhibitor (SSI), also known as suppressor of cytokine signaling (SOCS), family. SSI family members are cytokine-inducible negative regulators of cytokine signaling. The expression of this gene is induced by various cytokines, including IL6, IL10, and interferon (IFN)-gamma. The protein encoded by this gene can bind to JAK2 kinase, and inhibit the activity of JAK2 kinase. For signaling of IL-6, Epo, GCSF and Leptin, binding of SOCS3 to the respective cytokine receptor has been found to be crucial for the inhibitory function of SOCS3. Studies of the mouse counterpart of this gene suggested the roles of this gene in the negative regulation of fetal liver hematopoiesis, and placental development.

## Application Notes

Optimal dilution of the SOCS3 antibody should be determined by the researcher.

## Immunogen

A human recombinant partial protein (amino acids S13-L225) was used as the immunogen for the SOCS3 antibody.

## Storage

After reconstitution, the SOCS3 antibody can be stored for up to one month at 4oC. For long-term, aliquot and store at -20oC. Avoid repeated freezing and thawing.