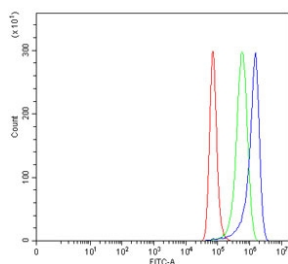


SNCG Antibody / Gamma Synuclein (RQ7521)

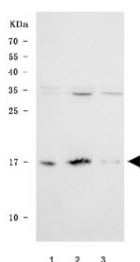
Catalog No.	Formulation	Size
RQ7521	0.5mg/ml if reconstituted with 0.2ml sterile DI water	100 ug

Bulk quote request

Availability	1-3 business days
Species Reactivity	Human
Format	Antigen affinity purified
Clonality	Polyclonal (rabbit origin)
Isotype	Rabbit IgG
Purity	Antigen affinity purified
Buffer	Lyophilized from 1X PBS with 2% Trehalose
UniProt	O76070
Applications	Western Blot : 0.5-1ug/ml Flow Cytometry : 1-3ug/million cells
Limitations	This SNCG antibody is available for research use only.



Flow cytometry testing of human HeLa cells with SNCG antibody at 1ug/million cells (blocked with goat sera); Red=cells alone, Green=isotype control, Blue= SNCG antibody.



Western blot testing of human 1) HeLa, 2) RT4 and 3) HaCaT cell lysate with SNCG antibody. Expected molecular weight: 13-17 kDa.

Description

Gamma-synuclein is a protein that in humans is encoded by the SNCG gene. This gene encodes a member of the synuclein family of proteins which are believed to be involved in the pathogenesis of neurodegenerative diseases. Mutations in this gene have also been associated with breast tumor development.

Application Notes

Optimal dilution of the SNCG antibody should be determined by the researcher.

Immunogen

Amino acids VVRKEDLRPSAPQQEGEASKEK from the human protein were used as the immunogen for the SNCG antibody.

Storage

After reconstitution, the SNCG antibody can be stored for up to one month at 4oC. For long-term, aliquot and store at -20oC. Avoid repeated freezing and thawing.