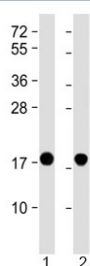


## SNCA Antibody / Alpha-Synuclein [clone 1853CT506.24.16] (F54196)

Catalog No.	Formulation	Size
F54196-0.2ML	In 1X PBS, pH 7.4, with 0.09% sodium azide	0.2 ml
F54196-0.05ML	In 1X PBS, pH 7.4, with 0.09% sodium azide	0.05 ml

[Bulk quote request](#)

<b>Availability</b>	1-3 business days
<b>Species Reactivity</b>	Human, Mouse
<b>Format</b>	Purified
<b>Clonality</b>	Monoclonal (mouse origin)
<b>Isotype</b>	IgG1, kappa
<b>Clone Name</b>	1853CT506.24.16
<b>Purity</b>	Protein G purified
<b>UniProt</b>	P37840
<b>Applications</b>	Western Blot : 1:1000-1:2000
<b>Limitations</b>	This SNCA antibody is available for research use only.



Western blot testing of 1) human brain and 2) mouse brain lysate with SNCA antibody at 1:2000. Predicted molecular weight ~15 kDa.

### Description

Synuclein alpha (SNCA) may be involved in the regulation of dopamine release and transport. Induces fibrillization of microtubule-associated protein tau. Reduces neuronal responsiveness to various apoptotic stimuli, leading to a decreased caspase-3 activation.

### Application Notes

The stated application concentrations are suggested starting points. Titration of the SNCA antibody may be required due to differences in protocols and secondary/substrate sensitivity.

## **Immunogen**

Recombinant human SNCA protein was used as the immunogen for the SNCA antibody.

## **Storage**

Aliquot the SNCA antibody and store frozen at -20oC or colder. Avoid repeated freeze-thaw cycles.