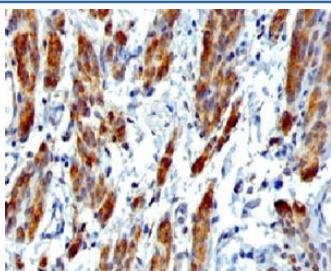


SMMHC Antibody [clone SMM11-1] (V7120)

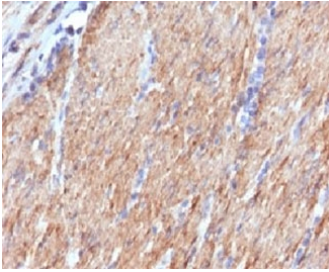
Catalog No.	Formulation	Size
V7120-100UG	0.2 mg/ml in 1X PBS with 0.1 mg/ml BSA (US sourced) and 0.05% sodium azide	100 ug
V7120-20UG	0.2 mg/ml in 1X PBS with 0.1 mg/ml BSA (US sourced) and 0.05% sodium azide	20 ug
V7120SAF-100UG	1 mg/ml in 1X PBS; BSA free, sodium azide free	100 ug
V7120IHC-7ML	Prediluted in 1X PBS with 0.1 mg/ml BSA (US sourced) and 0.05% sodium azide; *For IHC use only*	7 ml

[Bulk quote request](#)

Availability	1-3 business days
Species Reactivity	Human
Format	Purified
Clonality	Monoclonal (mouse origin)
Isotype	Mouse IgG1
Clone Name	SMM11-1
Purity	Protein G affinity chromatography
UniProt	P35749
Localization	Cytoplasmic
Applications	Immunohistochemistry (FFPE) : 1-2ug/ml for 30 min at RT Prediluted IHC Only Format : incubate for 30 min at RT (1)
Limitations	This SMMHC antibody is available for research use only.



IHC testing of FFPE human Leiomyosarcoma with SMMHC antibody (clone SMM11-1). FFPE testing requires sections to be boiled in pH 9 10mM Tris with 1mM EDTA for 10-20 minutes, followed by cooling at RT for 20 minutes, prior to staining.



IHC testing of FFPE human colon carcinoma with SMMHC antibody (clone SMM11-1). FFPE testing requires sections to be boiled in pH 9 10mM Tris with 1mM EDTA for 10-20 minutes, followed by cooling at RT for 20 minutes, prior to staining.

Description

SMMHC is a smooth muscle myosin belonging to the myosin heavy chain family. The gene product is a subunit of a hexameric protein that consists of two heavy chain subunits and two pairs of non-identical light chain subunits. It functions as a major contractile protein, converting chemical energy into mechanical energy through the hydrolysis of ATP.

[RefSeq]

Application Notes

Titration of the SMMHC antibody may be required for optimal performance.

1. The prediluted format is supplied in a dropper bottle and is optimized for use in IHC. After epitope retrieval step (if required), drip mAb solution onto the tissue section and incubate at RT for 30 min.

Immunogen

Human recombinant protein was used as the immunogen for the SMMHC antibody.

Storage

Store the SMMHC antibody at 2-8°C (with azide) or aliquot and store at -20°C or colder (without azide).