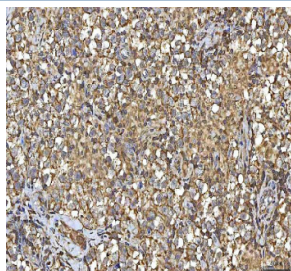


## SMIM8 Antibody / Small integral membrane protein 8 (RQ8851)

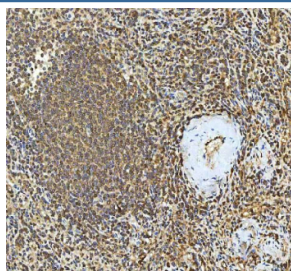
Catalog No.	Formulation	Size
RQ8851	0.5mg/ml if reconstituted with 0.2ml sterile DI water	100 ug

**Bulk quote request**

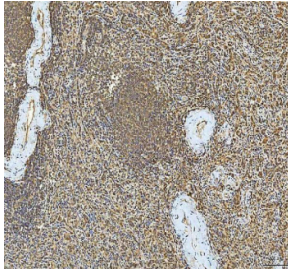
<b>Availability</b>	1-3 days
<b>Species Reactivity</b>	Human
<b>Format</b>	Antigen affinity purified
<b>Clonality</b>	Polyclonal (rabbit origin)
<b>Isotype</b>	Rabbit IgG
<b>Purity</b>	Antigen affinity chromatography
<b>Buffer</b>	Lyophilized from 1X PBS with 2% Trehalose
<b>UniProt</b>	Q96KF7
<b>Applications</b>	Immunohistochemistry (FFPE) : 2-5ug/ml ELISA : 0.1-0.5ug/ml
<b>Limitations</b>	This SMIM8 antibody is available for research use only.



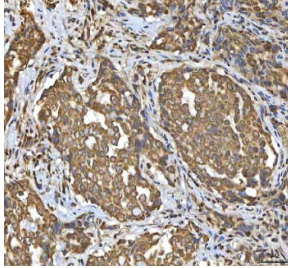
IHC staining of FFPE human testicular seminoma tissue with SMIM8 antibody. HIER: boil tissue sections in pH8 EDTA for 20 min and allow to cool before testing.



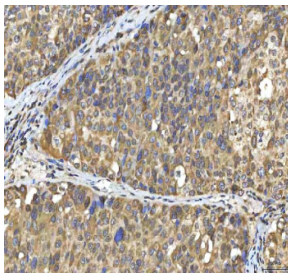
IHC staining of FFPE human spleen tissue with SMIM8 antibody. HIER: boil tissue sections in pH8 EDTA for 20 min and allow to cool before testing.



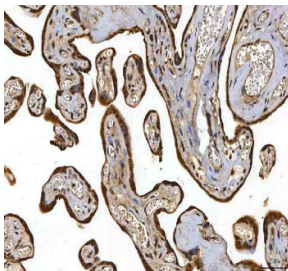
IHC staining of FFPE human spleen tissue with SMIM8 antibody. HIER: boil tissue sections in pH8 EDTA for 20 min and allow to cool before testing.



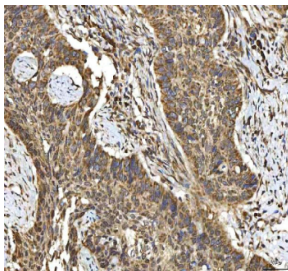
IHC staining of FFPE human lung cancer tissue with SMIM8 antibody. HIER: boil tissue sections in pH8 EDTA for 20 min and allow to cool before testing.



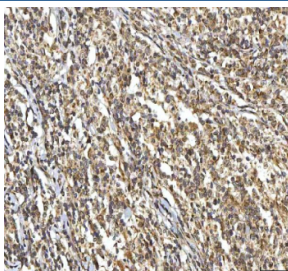
IHC staining of FFPE human liver cancer tissue with SMIM8 antibody. HIER: boil tissue sections in pH8 EDTA for 20 min and allow to cool before testing.



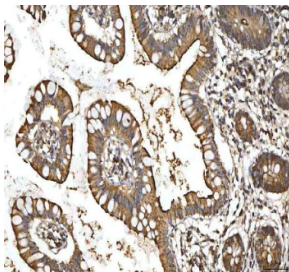
IHC staining of FFPE human placental tissue with SMIM8 antibody. HIER: boil tissue sections in pH8 EDTA for 20 min and allow to cool before testing.



IHC staining of FFPE human laryngeal squamous cell carcinoma tissue with SMIM8 antibody. HIER: boil tissue sections in pH8 EDTA for 20 min and allow to cool before testing.



IHC staining of FFPE human diffuse large B cell lymphoma tissue with SMIM8 antibody. HIER: boil tissue sections in pH8 EDTA for 20 min and allow to cool before testing.



IHC staining of FFPE human colon tissue with SMIM8 antibody. HIER: boil tissue sections in pH8 EDTA for 20 min and allow to cool before testing.

## Description

SMIM8, also known as Small Integral Membrane Protein 8, is a tiny protein that is embedded in the cell membrane. SMIM8 plays a significant role in various cell functions, including cell adhesion, signaling, and transport. Research studies have shown that SMIM8 is involved in mediating cell-cell interactions and maintaining cell structure. This protein is essential for the proper functioning of our immune system, as it helps facilitate communication between cells. Additionally, SMIM8 has been implicated in diseases such as cancer and autoimmune disorders, highlighting its importance in maintaining cellular homeostasis.

## Application Notes

Optimal dilution of the SMIM8 antibody should be determined by the researcher.

## Immunogen

An E.coli-derived human recombinant protein (amino acids M1-D97) was used as the immunogen for the SMIM8 antibody.

## Storage

After reconstitution, the SMIM8 Antibody can be stored for up to one month at 4oC. For long-term, aliquot and store at -20oC. Avoid repeated freezing and thawing.