

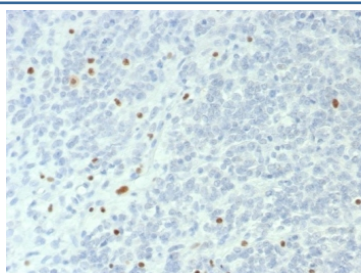
SMARCA4 Antibody / BRG1 [clone BRG1/6531R] (V4586)

Catalog No.	Formulation	Size
V4586-100UG	0.2 mg/ml in 1X PBS with 0.1 mg/ml BSA (US sourced), 0.05% sodium azide	100 ug
V4586-20UG	0.2 mg/ml in 1X PBS with 0.1 mg/ml BSA (US sourced), 0.05% sodium azide	20 ug
V4586SAF-100UG	1 mg/ml in 1X PBS; BSA free, sodium azide free	100 ug

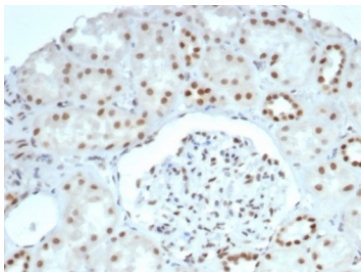
Recombinant **RABBIT MONOCLONAL**

[Bulk quote request](#)

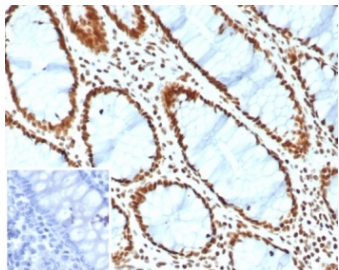
Availability	1-3 business days
Species Reactivity	Human
Format	Purified
Clonality	Recombinant Rabbit Monoclonal
Isotype	Rabbit IgG, kappa
Clone Name	BRG1/6531R
Purity	Protein A/G affinity
UniProt	P51532
Localization	Nucleus
Applications	ELISA (Order BSA-free Format For Coating) : Western Blot : 1-2ug/ml Immunohistochemistry (FFPE) : 1-2ug/ml for 30 min at RT
Limitations	This SMARCA4 antibody is available for research use only.



IHC staining of FFPE human ovarian small cell carcinoma with SMARCA4 antibody (clone BRG1/6531R). HIER: boil tissue sections in pH 9 10mM Tris with 1mM EDTA for 20 min and allow to cool before testing.



IHC staining of FFPE human kidney tissue with SMARCA4 antibody (clone BRG1/6531R). HIER: boil tissue sections in pH 9 10mM Tris with 1mM EDTA for 20 min and allow to cool before testing.



IHC staining of FFPE human colon tissue with SMARCA4 antibody (clone BRG1/6531R). Inset: PBS used in place of primary Ab (secondary Ab negative control). HIER: boil tissue sections in pH 9 10mM Tris with 1mM EDTA for 20 min and allow to cool before testing.

Description

The SWI-SNF complex is involved in the activation of transcription via the remodeling of nucleosome structure in an ATP-dependent manner. Brm (also designated SNF2A) and Brg-1 (also designated SNF2B) are the ATPase subunits of the mammalian SWI/SNF complex. Brm, Brg-1, Ini1 (integrase interactor 1, also designated SNF5), BAF155 (also designated SRG3) and BAF170 are thought to comprise the functional core of the SWI/SNF complex. Addition of Ini1, BAF155 and BAF170 to Brg-1 appears to increase remodeling activity. Other complex subunits are thought to play regulatory roles. hSNF2L and hSNF2H both appear to be homologs of *Drosophila* ISWI, a Brm related ATPase that is present in chromatin remodeling complexes other than SWI/ SNF, including the NURF (nucleosome remodeling factor).

Application Notes

Optimal dilution of the SMARCA4 antibody should be determined by the researcher.

Immunogen

A recombinant partial protein sequence (within amino acids 200-400) from the human protein was used as the immunogen for the SMARCA4 antibody.

Storage

Aliquot the SMARCA4 antibody and store frozen at -20oC or colder. Avoid repeated freeze-thaw cycles.