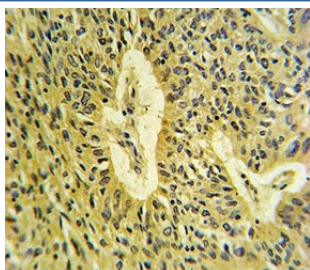


SMAD7 Antibody / MADH7 (F49844)

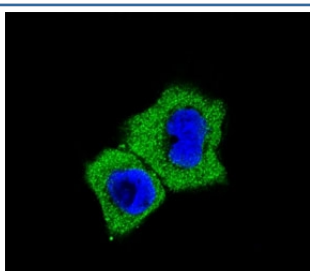
Catalog No.	Formulation	Size
F49844-0.4ML	In 1X PBS, pH 7.4, with 0.09% sodium azide	0.4 ml
F49844-0.08ML	In 1X PBS, pH 7.4, with 0.09% sodium azide	0.08 ml

[Bulk quote request](#)

Availability	1-3 business days
Species Reactivity	Human
Predicted Reactivity	Rat
Format	Purified
Clonality	Polyclonal (rabbit origin)
Isotype	Rabbit Ig
Purity	Purified
UniProt	O15105
Applications	Western Blot : 1:1000 IHC (Paraffin) : 1:10-1:50 Immunofluorescence : 1:10-1:50
Limitations	This SMAD7 antibody is available for research use only.



SMAD7 antibody IHC analysis in formalin fixed and paraffin embedded lung carcinoma.



Fluorescent confocal image of A431 cells stained with SMAD7 antibody at 1:25. Immunoreactivity is localized to the cytoplasm.

95
72
55
36
28

Western blot analysis of SMAD7 antibody in ZR-75-1 lysate. Observed molecular weight:
45~55 kDa.

Description

SMAD7 is a member of the MAD-related family of molecules. MAD-related proteins are a recently identified family of intracellular proteins that are thought to be essential components in the signaling pathways of the serine/threonine kinase receptors of the transforming growth factor beta super family.

Application Notes

Titration of the SMAD7 antibody may be required due to differences in protocols and secondary/substrate sensitivity.

Immunogen

A portion of amino acids 195-224 from the human protein was used as the immunogen for this SMAD7 antibody.

Storage

Aliquot the SMAD7 antibody and store frozen at -20oC or colder. Avoid repeated freeze-thaw cycles.