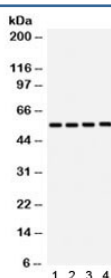


SMAD3 Antibody (R32172)

Catalog No.	Formulation	Size
R32172	0.5mg/ml if reconstituted with 0.2ml sterile DI water	100 ug

Bulk quote request

Availability	1-3 business days
Species Reactivity	Human
Format	Antigen affinity purified
Clonality	Polyclonal (rabbit origin)
Isotype	Rabbit IgG
Purity	Antigen affinity
Buffer	Lyophilized from 1X PBS with 2.5% BSA and 0.025% sodium azide
UniProt	P84022
Localization	Nuclear and cytoplasmic
Applications	Western Blot : 0.1-0.5ug/ml
Limitations	This SMAD3 antibody is available for research use only.



Western blot testing of human 1) U87, 2) placenta, 3) PANC and 4) HeLa lysate with SMAD3 antibody. Routinely observed at a molecular weight of 48~56 kDa.

Description

Mothers against decapentaplegic homolog 3 also known as SMAD family member 3 or SMAD3 is a protein that in humans is encoded by the SMAD3 gene. SMAD3 is a member of the SMAD family of proteins. It is located in 15q22.33. And it mediates the signals from the transforming growth factor beta super family ligands that regulate cell proliferation, differentiation and death. Based on its essential role in TGF beta signaling pathway, SMAD3 has been related with tumor growth in cancer development.

Application Notes

Optimal dilution of the SMAD3 antibody should be determined by the researcher.

Immunogen

Amino acids DHQMNHSM DAGSPNLSPNPMSPA HNNLDLQ of human SMAD3 were used as the immunogen for the SMAD3 antibody.

Storage

After reconstitution, the SMAD3 antibody can be stored for up to one month at 4oC. For long-term, aliquot and store at -20oC. Avoid repeated freezing and thawing.