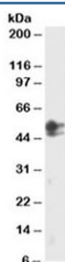


## SMAD2 Antibody (R35875)

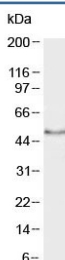
Catalog No.	Formulation	Size
R35875-100UG	0.5 mg/ml in 1X TBS, pH7.3, with 0.5% BSA (US sourced) and 0.02% sodium azide	100 ug

[Bulk quote request](#)

Availability	1-3 business days
Species Reactivity	Human, Mouse
Predicted Reactivity	Cow
Format	Antigen affinity purified
Clonality	Polyclonal (goat origin)
Isotype	Goat Ig
Purity	Antigen affinity
Gene ID	4087
Applications	Western Blot : 2-4ug/ml ELISA (peptide) LOD : 1:4000
Limitations	This SMAD2 antibody is available for research use only.



Western blot testing of HeLa lysate with SMAD2 antibody at 2ug/ml. The 467 AA and 437 AA isoforms may be detected with this Ab.



Western blot testing of mouse testis lysate with SMAD2 antibody at 2ug/ml.

## Description

Additional name(s) for this target protein: Mothers against decapentaplegic homolog 2, MADH2

## Application Notes

Optimal dilution of the SMAD2 antibody should be determined by the researcher.

## Immunogen

Amino acids SEIWGLSTPNTIDC were used as the immunogen for this SMAD2 antibody.

## Storage

Aliquot and store the SMAD2 antibody at -20oC.