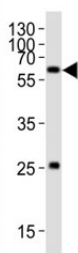


SMAD1 Antibody (F52871)

| Catalog No. | Formulation | Size |
|---------------|--|---------|
| F52871-0.4ML | In 1X PBS, pH 7.4, with 0.09% sodium azide | 0.4 ml |
| F52871-0.08ML | In 1X PBS, pH 7.4, with 0.09% sodium azide | 0.08 ml |

[Bulk quote request](#)

| | |
|-----------------------------|---|
| Availability | 1-3 business days |
| Species Reactivity | Human |
| Predicted Reactivity | Mouse, Rat, Bovine |
| Format | Antigen affinity purified |
| Clonality | Polyclonal (rabbit origin) |
| Isotype | Rabbit Ig |
| Purity | Antigen affinity |
| UniProt | Q15797 |
| Applications | Western Blot : 1:1000 |
| Limitations | This SMAD1 antibody is available for research use only. |



Western blot analysis of lysate from HT-1080 cell line using SMAD1 antibody; Ab was diluted at 1:1000. Predicted molecular weight: 52~60 kDa.

Description

Transcriptional modulator activated by BMP (bone morphogenetic proteins) type 1 receptor kinase. SMAD1 is a receptor-regulated SMAD (R-SMAD). SMAD1/OAZ1/PSMB4 complex mediates the degradation of the CREBBP/EP300 repressor SNIP1.

Application Notes

Titration of the SMAD1 antibody may be required due to differences in protocols and secondary/substrate sensitivity.

Immunogen

This SMAD1 antibody was produced from a rabbit immunized with a KLH conjugated synthetic peptide between 257-290 amino acids from the Central region of human SMAD1.

Storage

Aliquot the SMAD1 antibody and store frozen at -20oC or colder. Avoid repeated freeze-thaw cycles.