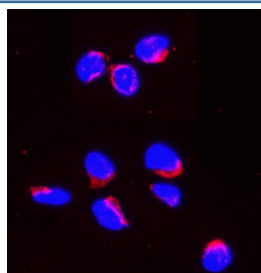


Smac Antibody / Diablo (R32332)

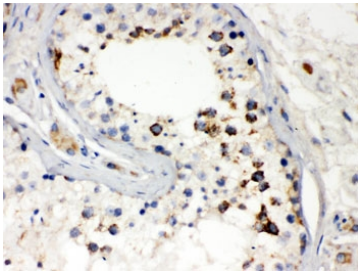
Catalog No.	Formulation	Size
R32332	0.5mg/ml if reconstituted with 0.2ml sterile DI water	100 ug

Bulk quote request

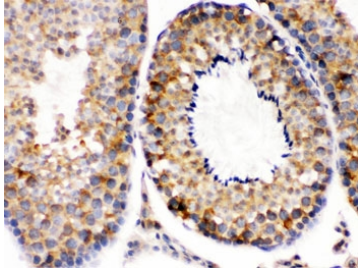
Availability	1-3 business days
Species Reactivity	Human, Mouse, Rat
Format	Antigen affinity purified
Clonality	Polyclonal (rabbit origin)
Isotype	Rabbit IgG
Purity	Antigen affinity
Buffer	Lyophilized from 1X PBS with 2.5% BSA and 0.025% sodium azide
UniProt	Q9NR28
Localization	Cytoplasmic
Applications	Western Blot : 0.1-0.5ug/ml Immunohistochemistry (FFPE) : 0.5-1ug/ml Immunofluorescence (FFPE) : 2-4ug/ml Flow Cytometry : 1-3ug/million cells ELISA : 0.1-0.5ug/ml (human protein tested); request BSA-free format for coating
Limitations	This Smac antibody is available for research use only.



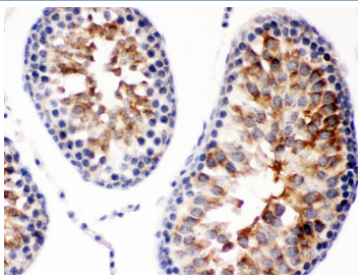
Immunofluorescent staining of FFPE human U-2 OS cells with Smac antibody (red) and DAPI nuclear stain (blue). HIER: steam section in pH6 citrate buffer for 20 min.



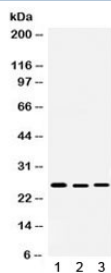
IHC testing of FFPE human testis with Smac antibody. HIER: Boil the paraffin sections in pH 6, 10mM citrate buffer for 20 minutes and allow to cool prior to staining.



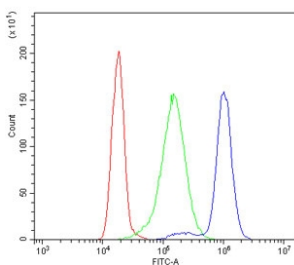
IHC testing of FFPE mouse testis with Smac antibody. HIER: Boil the paraffin sections in pH 6, 10mM citrate buffer for 20 minutes and allow to cool prior to staining.



IHC testing of FFPE rat testis with Smac antibody. HIER: Boil the paraffin sections in pH 6, 10mM citrate buffer for 20 minutes and allow to cool prior to staining.



Western blot testing of 1) rat testis, 2) human 22RV1 and 3) human SKOV lysate with Smac antibody. Expected/observed molecular weight 21~27 kDa.



Flow cytometry testing of human K562 cells with Smac antibody at 1ug/million cells (blocked with goat sera); Red=cells alone, Green=isotype control, Blue= Smac antibody.

Description

Diablo homolog (DIABLO), also referred to as second mitochondria-derived activator of caspases or SMAC, is a mitochondrial protein that in humans is encoded by the DIABLO (direct IAP binding protein with low pI) gene on chromosome 12. The encoded mitochondrial protein enters the cytosol when cells undergo apoptosis, and allows activation of caspases by binding to inhibitor of apoptosis proteins. Overexpression of the encoded protein sensitizes tumor cells to apoptosis. A mutation in this gene is associated with young-adult onset of nonsyndromic deafness-64. Alternative splicing results in multiple transcript variants encoding different isoforms.

Application Notes

Optimal dilution of the Smac antibody should be determined by the researcher.

Immunogen

Amino acids 56-239 of human Smac/Diablo were used as the immunogen for the Smac antibody.

Storage

After reconstitution, the Smac antibody can be stored for up to one month at 4oC. For long-term, aliquot and store at -20oC. Avoid repeated freezing and thawing.