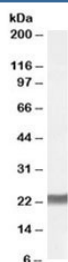


## SM22 alpha Antibody (R34755)

Catalog No.	Formulation	Size
R34755-100UG	0.5 mg/ml in 1X TBS, pH7.3, with 0.5% BSA (US sourced) and 0.02% sodium azide	100 ug

[Bulk quote request](#)

Availability	1-3 business days
Species Reactivity	Human
Predicted Reactivity	Dog, Mouse, Rat
Format	Antigen affinity purified
Clonality	Polyclonal (goat origin)
Isotype	Goat Ig
Purity	Antigen affinity
Gene ID	6876
Applications	Western Blot : 0.01-0.03ug/ml ELISA (peptide) LOD : 1:2000
Limitations	This SM22 alpha antibody is available for research use only.



Western blot testing of human placenta lysate with SM22 alpha antibody at 0.02ug/ml.  
Predicted molecular weight: ~23 kDa.

## Description

Additional name(s) for this target protein: TAGLN, SM22, SMCC, WS3-10, transgelin

## Application Notes

Optimal dilution of the SM22 alpha antibody should be determined by the researcher.

## Immunogen

Amino acids MTGYGRPRQIIS were used as the immunogen for this SM22 alpha antibody.

## Storage

Aliquot and store the SM22 alpha antibody at -20oC.