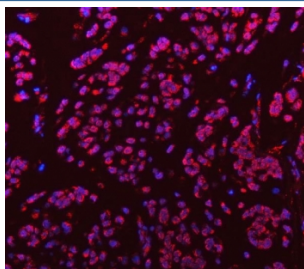


## Sm-D3 Antibody / SNRPD3 (RQ7740)

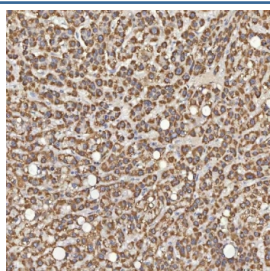
Catalog No.	Formulation	Size
RQ7740	0.5mg/ml if reconstituted with 0.2ml sterile DI water	100 ug

**Bulk quote request**

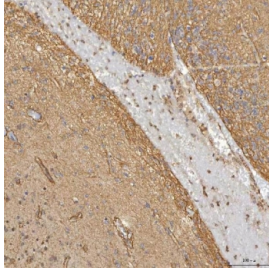
<b>Availability</b>	1-3 business days
<b>Species Reactivity</b>	Human, Mouse, Rat
<b>Format</b>	Antigen affinity purified
<b>Clonality</b>	Polyclonal (rabbit origin)
<b>Isotype</b>	Rabbit IgG
<b>Purity</b>	Antigen affinity purified
<b>Buffer</b>	Lyophilized from 1X PBS with 2% Trehalose
<b>UniProt</b>	P62318
<b>Localization</b>	Cytoplasmic, nuclear
<b>Applications</b>	Western Blot : 0.5-1ug/ml Immunohistochemistry (FFPE) : 2-5ug/ml Direct ELISA : 0.1-0.5ug/ml
<b>Limitations</b>	This Sm-D3 antibody is available for research use only.



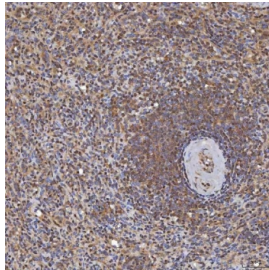
Immunofluorescent staining of FFPE human breast cancer tissue with Sm-D3 antibody (red) and DAPI nuclear stain (blue). HIER: steam section in pH8 EDTA buffer for 20 min.



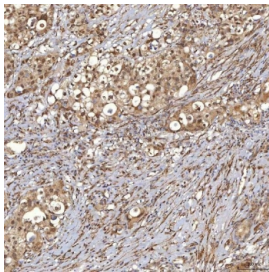
IHC staining of FFPE human liver cancer tissue with Sm-D3 antibody. HIER: boil tissue sections in pH8 EDTA for 20 min and allow to cool before testing.



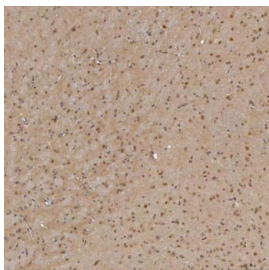
IHC staining of FFPE human glioblastoma tissue with Sm-D3 antibody. HIER: boil tissue sections in pH8 EDTA for 20 min and allow to cool before testing.



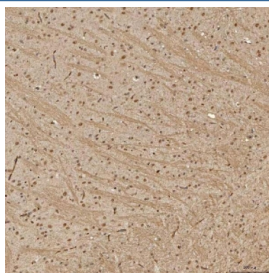
IHC staining of FFPE human prostate adenocarcinoma tissue with Sm-D3 antibody. HIER: boil tissue sections in pH8 EDTA for 20 min and allow to cool before testing.



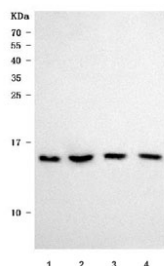
IHC staining of FFPE human breast cancer tissue with Sm-D3 antibody. HIER: boil tissue sections in pH8 EDTA for 20 min and allow to cool before testing.



IHC staining of FFPE mouse brain tissue with Sm-D3 antibody. HIER: boil tissue sections in pH8 EDTA for 20 min and allow to cool before testing.



IHC staining of FFPE rat brain tissue with Sm-D3 antibody. HIER: boil tissue sections in pH8 EDTA for 20 min and allow to cool before testing.



Western blot testing of 1) human MCF7, 2) human 293T, 3) rat PC-12 and 4) mouse NIH 3T3 cell lysate with Sm-D3 antibody. Predicted molecular weight ~14 kDa.

## Description

Small nuclear ribonucleoprotein Sm D3 is a protein that in humans is encoded by the SNRPD3 gene. This gene encodes a core component of the spliceosome, which is a nuclear ribonucleoprotein complex that functions in pre-mRNA splicing. Alternative splicing results in multiple transcript variants.

## Application Notes

Optimal dilution of the Sm-D3 antibody should be determined by the researcher.

## Immunogen

E. coli-derived recombinant human protein (amino acids M1-R112) was used as the immunogen for the Sm-D3 antibody.

## Storage

After reconstitution, the Sm-D3 antibody can be stored for up to one month at 4°C. For long-term, aliquot and store at -20°C. Avoid repeated freezing and thawing.