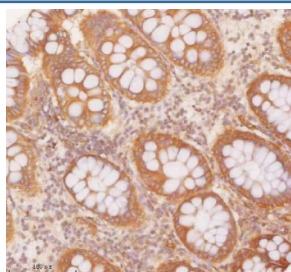


SLK Antibody / STE20-related kinase (RQ8845)

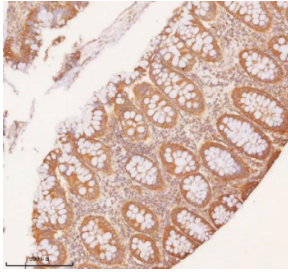
Catalog No.	Formulation	Size
RQ8845	0.5mg/ml if reconstituted with 0.2ml sterile DI water	100 ug

Bulk quote request

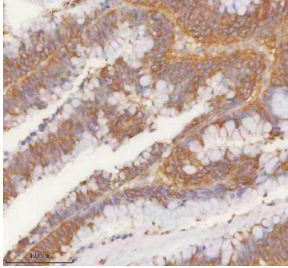
Availability	1-2 days
Species Reactivity	Human, Mouse
Format	Antigen affinity purified
Clonality	Polyclonal (rabbit origin)
Isotype	Rabbit IgG
Purity	Antigen affinity chromatography
Buffer	Lyophilized from 1X PBS with 2% Trehalose
UniProt	Q9H2G2
Localization	Cytoplasm
Applications	Western Blot : 1-2ug/ml Immunohistochemistry (FFPE) : 2-5ug/ml Flow Cytometry : 1-3ug/million cells ELISA : 0.1-0.5ug/ml
Limitations	This SLK antibody is available for research use only.



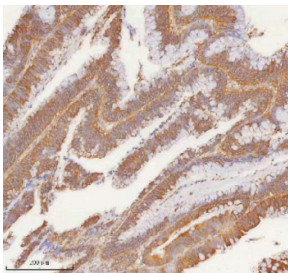
IHC staining of FFPE human colon tissue with SLK antibody. HIER: boil tissue sections in pH8 EDTA for 20 min and allow to cool before testing.



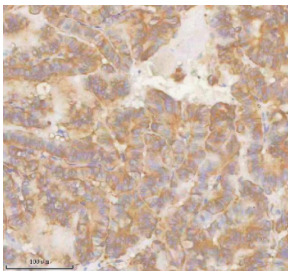
IHC staining of FFPE human colon tissue with SLK antibody. HIER: boil tissue sections in pH8 EDTA for 20 min and allow to cool before testing.



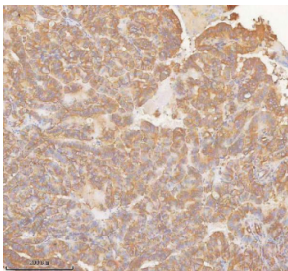
IHC staining of FFPE human colon adenocarcinoma tissue with SLK antibody. HIER: boil tissue sections in pH8 EDTA for 20 min and allow to cool before testing.



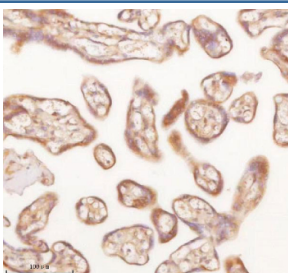
IHC staining of FFPE human colon adenocarcinoma tissue with SLK antibody. HIER: boil tissue sections in pH8 EDTA for 20 min and allow to cool before testing.



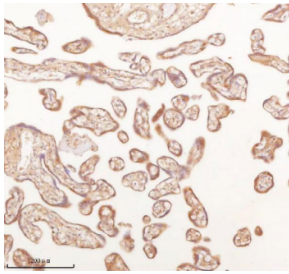
IHC staining of FFPE human thyroid papillary carcinoma tissue with SLK antibody. HIER: boil tissue sections in pH8 EDTA for 20 min and allow to cool before testing.



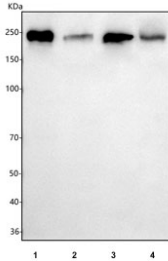
IHC staining of FFPE human thyroid papillary carcinoma tissue with SLK antibody. HIER: boil tissue sections in pH8 EDTA for 20 min and allow to cool before testing.



IHC staining of FFPE human placental tissue with SLK antibody. HIER: boil tissue sections in pH8 EDTA for 20 min and allow to cool before testing.



IHC staining of FFPE human placental tissue with SLK antibody. HIER: boil tissue sections in pH8 EDTA for 20 min and allow to cool before testing.



Western blot testing of 1) human RT4, 2) human A431, 3) human A549 and 4) mouse heart tissue lysate with SLK antibody. Predicted molecular weight ~143 kDa, can be observed at ~220 kDa (1), (2).

Description

STE20-like serine/threonine-protein kinase is an enzyme that in humans is encoded by the SLK gene. This gene is mapped to chromosome 10q24.33-q25.1. SLK is a kinase with multiple functional domains that is predicted to regulate cytoskeletal organization and responses to apoptotic stimuli.

Application Notes

Optimal dilution of the SLK antibody should be determined by the researcher.

Immunogen

An E.coli-derived human recombinant protein (amino acids E328-S1232) was used as the immunogen for the SLK antibody.

Storage

After reconstitution, the SLK antibody can be stored for up to one month at 4°C. For long-term, aliquot and store at -20°C. Avoid repeated freezing and thawing.

References (2)