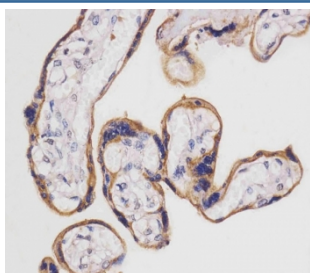


## SLC3A2 Antibody / CD98 (F54536)

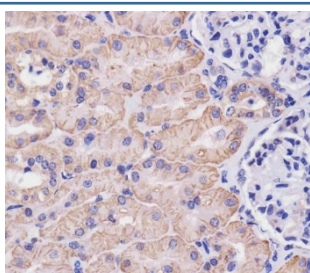
Catalog No.	Formulation	Size
F54536-0.4ML	In 1X PBS, pH 7.4, with 0.09% sodium azide	0.4 ml
F54536-0.08ML	In 1X PBS, pH 7.4, with 0.09% sodium azide	0.08 ml

**Bulk quote request**

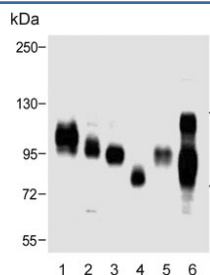
<b>Availability</b>	1-3 business days
<b>Species Reactivity</b>	Human
<b>Format</b>	Purified
<b>Clonality</b>	Polyclonal (rabbit origin)
<b>Isotype</b>	Rabbit Ig
<b>Purity</b>	Antigen affinity purified
<b>UniProt</b>	P08195
<b>Applications</b>	Western Blot : 1:500-1:2000 Immunohistochemistry (FFPE) : 1:25
<b>Limitations</b>	This SLC3A2 antibody is available for research use only.



IHC testing of FFPE human placental tissue with SLC3A2 antibody. HIER: steam section in pH6 citrate buffer for 20 min and allow to cool prior to staining.



IHC testing of FFPE human kidney tissue with SLC3A2 antibody. HIER: steam section in pH6 citrate buffer for 20 min and allow to cool prior to staining.



Western blot testing of human 1) HL60, 2) HepG2, 3) A431, 4) kidney, 5) placenta and 6) HeLa cell lysate with SLC3A2 antibody. Expected molecular weight: 75-120 kDa depending on glycosylation level.

## Description

Plays a role in nitric oxide synthesis in human umbilical vein endothelial cells (HUVECs) via transport of L-arginine. [UniProt]

## Application Notes

The stated application concentrations are suggested starting points. Titration of the SLC3A2 antibody may be required due to differences in protocols and secondary/substrate sensitivity.

## Immunogen

A portion of amino acids 588-615 from the human protein was used as the immunogen for the SLC3A2 antibody.

## Storage

Aliquot the SLC3A2 antibody and store frozen at -20°C or colder. Avoid repeated freeze-thaw cycles.