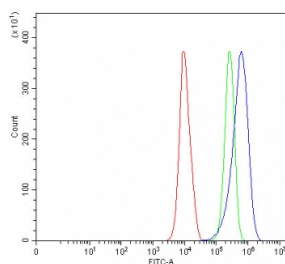


SLC35E4 Antibody (RQ7709)

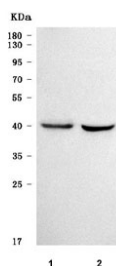
Catalog No.	Formulation	Size
RQ7709	0.5mg/ml if reconstituted with 0.2ml sterile DI water	100 ug

Bulk quote request

Availability	1-3 business days
Species Reactivity	Human
Format	Antigen affinity purified
Clonality	Polyclonal (rabbit origin)
Isotype	Rabbit IgG
Purity	Antigen affinity purified
Buffer	Lyophilized from 1X PBS with 2% Trehalose
UniProt	Q6ICL7
Applications	Western Blot : 0.5-1ug/ml Flow Cytometry : 1-3ug/million cells Direct ELISA : 0.1-0.5ug/ml
Limitations	This SLC35E4 antibody is available for research use only.



Flow cytometry testing of human PC-3 cells with SLC35E4 antibody at 1ug/million cells (blocked with goat sera); Red=cells alone, Green=isotype control, Blue= SLC35E4 antibody.



Western blot testing of human 1) A431 and 2) SiHa cell lysate with SLC35E4 antibody. Predicted molecular weight ~37 kDa.

Description

Solute carrier family 35 member E4 is predicted to enable antiporter activity. Predicted to be involved in transmembrane transport. Predicted to be integral component of membrane. Predicted to be active in Golgi apparatus.

Application Notes

Optimal dilution of the SLC35E4 antibody should be determined by the researcher.

Immunogen

E. coli-derived recombinant human protein (amino acids M1-L350) was used as the immunogen for the SLC35E4 antibody.

Storage

After reconstitution, the SLC35E4 antibody can be stored for up to one month at 4°C. For long-term, aliquot and store at -20°C. Avoid repeated freezing and thawing.