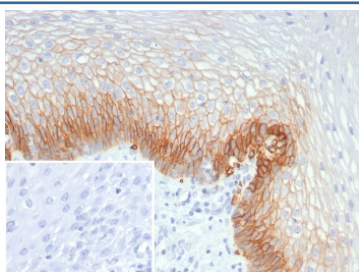


## SLC2A1 Antibody / GLUT-1 [clone GLUT1/7308] (V4685)

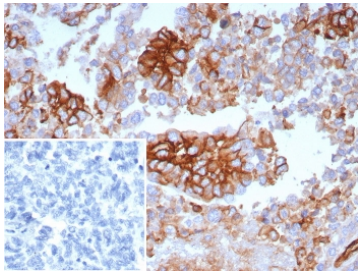
Catalog No.	Formulation	Size
V4685-100UG	0.2 mg/ml in 1X PBS with 0.1 mg/ml BSA (US sourced), 0.05% sodium azide	100 ug
V4685-20UG	0.2 mg/ml in 1X PBS with 0.1 mg/ml BSA (US sourced), 0.05% sodium azide	20 ug
V4685SAF-100UG	1 mg/ml in 1X PBS; BSA free, sodium azide free	100 ug

[Bulk quote request](#)

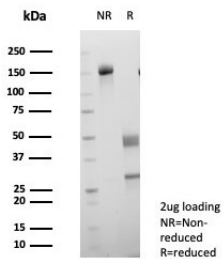
<b>Availability</b>	1-3 business days
<b>Species Reactivity</b>	Human
<b>Format</b>	Purified
<b>Clonality</b>	Monoclonal (mouse origin)
<b>Isotype</b>	Mouse IgG
<b>Clone Name</b>	GLUT1/7308
<b>Purity</b>	Protein A/G affinity
<b>UniProt</b>	P11166
<b>Localization</b>	Cell Surface
<b>Applications</b>	Immunohistochemistry (FFPE) : 1-2ug/ml for 30 min at RT
<b>Limitations</b>	This SLC2A1 antibody is available for research use only.



IHC staining of FFPE human esophagus tissue with SLC2A1 antibody (clone GLUT1/7308). Inset: PBS used in place of primary Ab (secondary Ab negative control).  
 HIER: boil tissue sections in pH 9 10mM Tris with 1mM EDTA for 20 min and allow to cool before testing.



IHC staining of FFPE human ovarian carcinoma tissue with SLC2A1 antibody (clone GLUT1/7308). Inset: PBS used in place of primary Ab (secondary Ab negative control). HIER: boil tissue sections in pH 9 10mM Tris with 1mM EDTA for 20 min and allow to cool before testing.



SDS-PAGE analysis of purified, BSA-free SLC2A1 antibody (clone GLUT1/7308) as confirmation of integrity and purity.

## Description

Recognizes a protein of 55kDa, which is identified as GLUT-1. Glucose transporters are integral membrane glycoproteins involved in transporting glucose into most cells. There are many types of glucose transport carrier proteins, designated as Glut-1 to Glut-12. Glut-1 is a major glucose transporter in the mammalian blood-brain barrier. It is expressed in high density on the membranes of human erythrocytes and the brain capillaries that comprise the blood-brain barrier. Glut-1 is expressed at variable levels in many human tissues. Overexpression of Glut-1 has been linked to tumor progression or poor survival of patients with carcinomas of the colon, breast, cervical, lung, bladder and mesothelioma. Glut-1 is a sensitive and specific marker for the differentiation of malignant mesothelioma (positive) from reactive mesothelium (negative).

## Application Notes

Optimal dilution of the SLC2A1 antibody should be determined by the researcher.

## Immunogen

A recombinant fragment of human GLUT1 protein (within amino acids 200-400) was used as the immunogen for the SLC2A1 antibody.

## Storage

Aliquot the SLC2A1 antibody and store frozen at -20oC or colder. Avoid repeated freeze-thaw cycles.