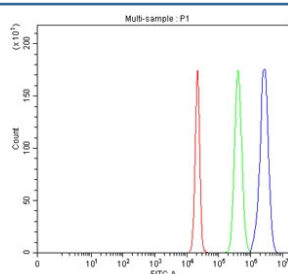


SLC26A9 Antibody / Solute carrier family 26 member 9 (RQ8738)

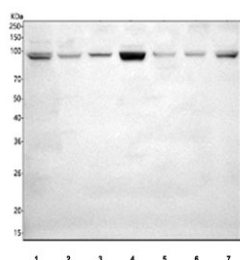
Catalog No.	Formulation	Size
RQ8738	0.5mg/ml if reconstituted with 0.2ml sterile DI water	100 ug

Bulk quote request

Availability	1-3 days
Species Reactivity	Human, Mouse, Rat
Format	Antigen affinity purified
Clonality	Polyclonal (rabbit origin)
Isotype	Rabbit IgG
Purity	Antigen affinity chromatography
Buffer	Lyophilized from 1X PBS with 2% Trehalose
UniProt	Q7LBE3
Applications	Western Blot : 1-2ug/ml Flow Cytometry : 1-3ug/million cells ELISA : 0.1-0.5ug/ml
Limitations	This SLC26A9 antibody is available for research use only.



Flow cytometry testing of fixed human HepG2 cells with SLC26A9 antibody at 1ug/million cells (blocked with goat sera); Red=cells alone, Green=isotype control, Blue=SLC26A9 antibody.



Western blot testing of 1) human HepG2, 2) rat stomach, 3) rat lung, 4) rat C6, 5) mouse stomach, 6) mouse lung and 7) mouse MFC cell lysate with SLC26A9 antibody. Predicted molecular weight ~87 kDa and ~97 kDa (two isoforms).

Description

The members of the SLC26 family of transporters, such as SLC26A9, are well conserved across species and mediate the electroneutral exchange of chloride for bicarbonate or sulfate across the plasma membrane.

Application Notes

Optimal dilution of the SLC26A9 antibody should be determined by the researcher.

Immunogen

An E.coli-derived human recombinant protein (amino acids K27-D763) was used as the immunogen for the SLC26A9 antibody.

Storage

After reconstitution, the SLC26A9 Antibody can be stored for up to one month at 4°C. For long-term, aliquot and store at -20°C. Avoid repeated freezing and thawing.