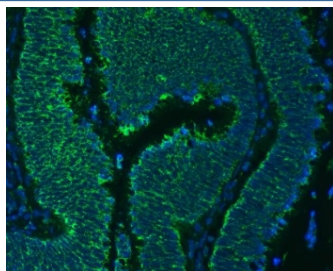


SLC25A24 Antibody / Mitochondrial ATP-Mg/Pi carrier protein 1 (RQ7686)

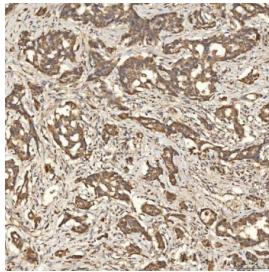
Catalog No.	Formulation	Size
RQ7686	0.5mg/ml if reconstituted with 0.2ml sterile DI water	100 ug

Bulk quote request

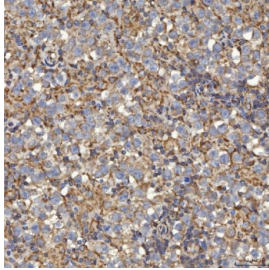
Availability	1-3 business days
Species Reactivity	Human
Format	Antigen affinity purified
Clonality	Polyclonal (rabbit origin)
Isotype	Rabbit IgG
Purity	Antigen affinity purified
Buffer	Lyophilized from 1X PBS with 2% Trehalose
UniProt	Q6NUK1
Localization	Cytoplasmic
Applications	Western Blot : 0.5-1ug/ml Immunohistochemistry (FFPE) : 2-5ug/ml Flow Cytometry : 1-3ug/million cells Immunofluorescence : 5ug/ml Direct ELISA : 0.1-0.5ug/ml
Limitations	This SLC25A24 antibody is available for research use only.



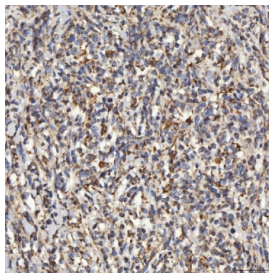
Immunofluorescent staining of FFPE human colon cancer tissue with SLC25A24 antibody (green) and DAPI nuclear stain (blue). HIER: steam section in pH6 citrate buffer for 20 min.



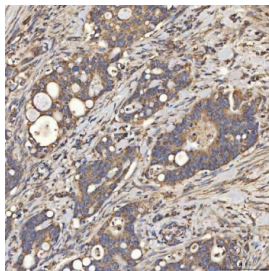
IHC staining of FFPE human lung adenocarcinoma tissue with SLC25A24 antibody. HIER: boil tissue sections in pH8 EDTA for 20 min and allow to cool before testing.



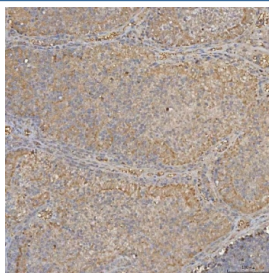
IHC staining of FFPE human testicular seminoma tissue with SLC25A24 antibody. HIER: boil tissue sections in pH8 EDTA for 20 min and allow to cool before testing.



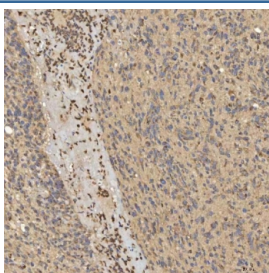
IHC staining of FFPE human diffuse large B cell lymphoma tissue with SLC25A24 antibody. HIER: boil tissue sections in pH8 EDTA for 20 min and allow to cool before testing.



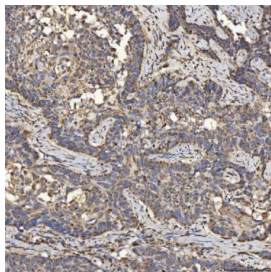
IHC staining of FFPE human duodenal papilla adenocarcinoma tissue with SLC25A24 antibody. HIER: boil tissue sections in pH8 EDTA for 20 min and allow to cool before testing.



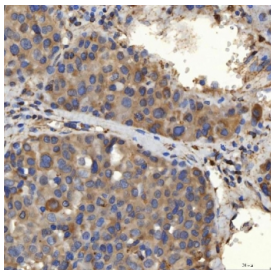
IHC staining of FFPE human endometrioid adenocarcinoma tissue with SLC25A24 antibody. HIER: boil tissue sections in pH8 EDTA for 20 min and allow to cool before testing.



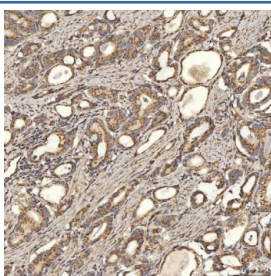
IHC staining of FFPE human glioblastoma tissue with SLC25A24 antibody. HIER: boil tissue sections in pH8 EDTA for 20 min and allow to cool before testing.



IHC staining of FFPE human larynx squamous cell carcinoma tissue with SLC25A24 antibody. HIER: boil tissue sections in pH8 EDTA for 20 min and allow to cool before testing.



IHC staining of FFPE human liver cancer tissue with SLC25A24 antibody. HIER: boil tissue sections in pH8 EDTA for 20 min and allow to cool before testing.



IHC staining of FFPE human prostate adenocarcinoma tissue with SLC25A24 antibody. HIER: boil tissue sections in pH8 EDTA for 20 min and allow to cool before testing.

Description

Calcium-binding mitochondrial carrier protein SCaMC-1 is a protein that in humans is encoded by the SLC25A24 gene. This gene encodes a carrier protein that transports ATP-Mg exchanging it for phosphate. Multiple transcript variants encoding different isoforms have been found for this gene.

Application Notes

Optimal dilution of the SLC25A24 antibody should be determined by the researcher.

Immunogen

E. coli-derived recombinant human protein (amino acids M1-I293) was used as the immunogen for the SLC25A24 antibody.

Storage

After reconstitution, the SLC25A24 antibody can be stored for up to one month at 4°C. For long-term, aliquot and store at -20°C. Avoid repeated freezing and thawing.

