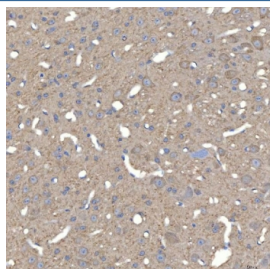


## SLC25A23 Antibody / Mitochondrial ATP-Mg/Pi carrier protein 2 (RQ7685)

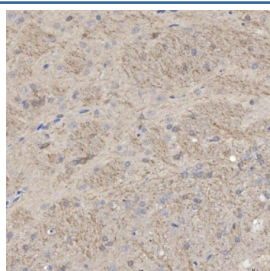
Catalog No.	Formulation	Size
RQ7685	0.5mg/ml if reconstituted with 0.2ml sterile DI water	100 ug

**Bulk quote request**

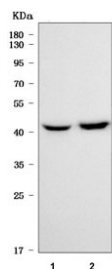
<b>Availability</b>	1-3 business days
<b>Species Reactivity</b>	Human, Mouse, Rat
<b>Format</b>	Antigen affinity purified
<b>Clonality</b>	Polyclonal (rabbit origin)
<b>Isotype</b>	Rabbit IgG
<b>Purity</b>	Antigen affinity purified
<b>Buffer</b>	Lyophilized from 1X PBS with 2% Trehalose
<b>UniProt</b>	Q9BV35
<b>Localization</b>	Cytoplasmic
<b>Applications</b>	Western Blot : 0.5-1ug/ml Immunohistochemistry (FFPE) : 2-5ug/ml Direct ELISA : 0.1-0.5ug/ml
<b>Limitations</b>	This SLC25A23 antibody is available for research use only.



IHC staining of FFPE mouse brain tissue with SLC25A23 antibody. HIER: boil tissue sections in pH8 EDTA for 20 min and allow to cool before testing.



IHC staining of FFPE rat brain tissue with SLC25A23 antibody. HIER: boil tissue sections in pH8 EDTA for 20 min and allow to cool before testing.



Western blot testing of 1) rat brain and 2) mouse brain tissue lysate with SLC25A23 antibody. Predicted molecular weight: 49-54 kDa (multiple isoforms).

## Description

Predicted to enable ATP transmembrane transporter activity. Involved in calcium import into the mitochondrion; positive regulation of mitochondrial calcium ion concentration; and regulation of cellular hyperosmotic salinity response. Located in mitochondrion.

## Application Notes

Optimal dilution of the SLC25A23 antibody should be determined by the researcher.

## Immunogen

E. coli-derived recombinant human protein (amino acids R16-L189) was used as the immunogen for the SLC25A23 antibody.

## Storage

After reconstitution, the SLC25A23 antibody can be stored for up to one month at 4°C. For long-term, aliquot and store at -20°C. Avoid repeated freezing and thawing.