

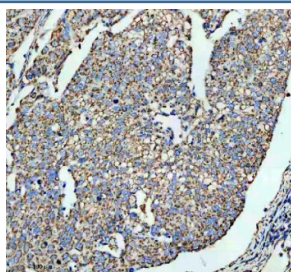
SLC16A1 Antibody / Monocarboxylate transporter 1 / MCT1 [clone 20S76] (RQ8882)

Catalog No.	Formulation	Size
RQ8882	Antibody in PBS with 0.02% sodium azide, 50% glycerol and 0.4-0.5mg/ml BSA	100 ul

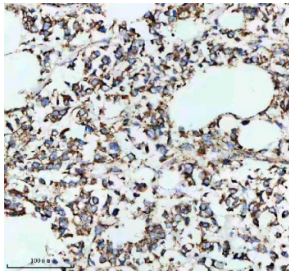
Recombinant **RABBIT MONOCLONAL**

[Bulk quote request](#)

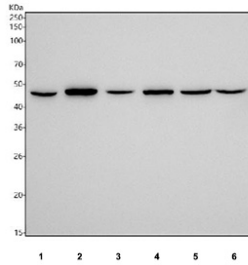
Availability	1-3 business days
Species Reactivity	Human
Format	Purified
Clonality	Recombinant Rabbit Monoclonal
Isotype	Rabbit IgG
Clone Name	20S76
Purity	Affinity chromatography
UniProt	P53985
Localization	Cell membrane
Applications	Western Blot : 1:500-1:2000 Immunohistochemistry (FFPE) : 1:50-1:200
Limitations	This SLC16A1 antibody is available for research use only.



IHC staining of FFPE human cervical cancer tissue with SLC16A1 antibody, HRP-secondary and DAB substrate. HIER: boil tissue sections in pH8 EDTA for 20 min and allow to cool before testing.



IHC staining of FFPE human breast cancer tissue with SLC16A1 antibody, HRP-secondary and DAB substrate. HIER: boil tissue sections in pH8 EDTA for 20 min and allow to cool before testing.



Western blot testing of human 1) K562, 2) A431, 3) HepG2, 4) 293T, 5) PC-3 and 6) SiHa cell lysate with SLC16A1 antibody. Predicted molecular weight ~54 kDa and ~46 kDa (two isoforms).