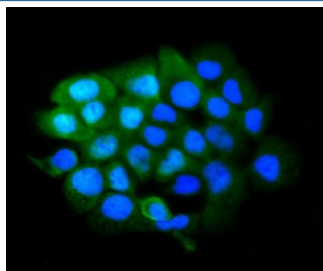


## SLBP Antibody (RQ6071)

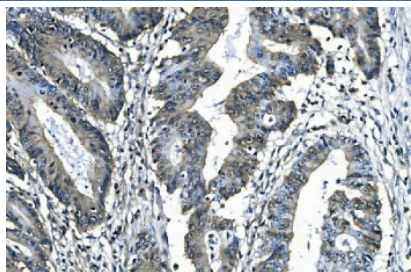
Catalog No.	Formulation	Size
RQ6071	0.5mg/ml if reconstituted with 0.2ml sterile DI water	100 ug

**Bulk quote request**

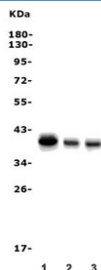
<b>Availability</b>	1-3 business days
<b>Species Reactivity</b>	Human, Mouse
<b>Format</b>	Antigen affinity purified
<b>Clonality</b>	Polyclonal (rabbit origin)
<b>Isotype</b>	Rabbit IgG
<b>Purity</b>	Affinity purified
<b>Buffer</b>	Lyophilized from 1X PBS with 2% Trehalose and 0.025% sodium azide
<b>UniProt</b>	Q14493
<b>Localization</b>	Nuclear, cytoplasmic
<b>Applications</b>	Western Blot : 0.5-1ug/ml Immunohistochemistry : 1-2ug/ml Immunofluorescence : 2-4ug/ml Flow Cytometry : 1-3ug/million cells Direct ELISA : 0.1-0.5ug/ml
<b>Limitations</b>	This SLBP antibody is available for research use only.



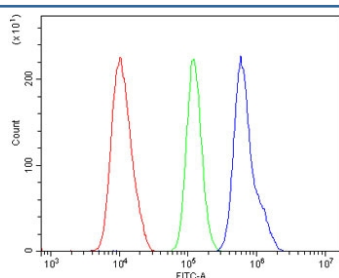
Immunofluorescent staining of FFPE human A431 cells with SLBP antibody (green) and DAPI nuclear stain (blue). HIER: steam section in pH6 citrate buffer for 20 min.



IHC staining of FFPE human rectal cancer with SLBP antibody. HIER: boil tissue sections in pH8 EDTA for 20 min and allow to cool before testing.



Western blot testing of 1) human K562, 2) human Caco-2 and 3) mouse spleen lysate with SLBP antibody. Expected molecular weight: 31-43 kDa.



Flow cytometry testing of human U-87 MG cells with SLBP antibody at 1ug/million cells (blocked with goat sera); Red=cells alone, Green=isotype control, Blue= SLBP antibody.

## Description

Histone RNA hairpin-binding protein is a protein that in human is encoded by the SLBP gene. This gene is mapped to 4p16.3. This gene encodes a protein that binds to the stem-loop structure in replication-dependent histone mRNAs. Histone mRNAs do not contain introns or polyadenylation signals, and are processed by endonucleolytic cleavage. The stem-loop structure is essential for efficient processing but this structure also controls the transport, translation and stability of histone mRNAs. Expression of the protein is regulated during the cell cycle, increasing more than 10-fold during the latter part of G1.

## Application Notes

Optimal dilution of the SLBP antibody should be determined by the researcher.

## Immunogen

Recombinant human protein (amino acids K146-S270) was used as the immunogen for the SLBP antibody.

## Storage

After reconstitution, the SLBP antibody can be stored for up to one month at 4°C. For long-term, aliquot and store at -20°C. Avoid repeated freezing and thawing.

