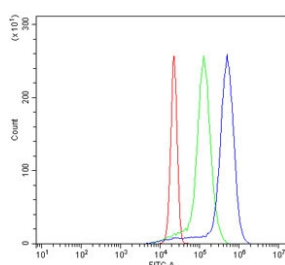


## SKAP2 Antibody / PRAP / SCAP2 (RQ6803)

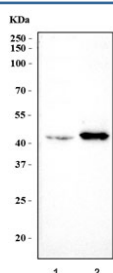
Catalog No.	Formulation	Size
RQ6803	0.5mg/ml if reconstituted with 0.2ml sterile DI water	100 ug

**Bulk quote request**

<b>Availability</b>	1-3 business days
<b>Species Reactivity</b>	Human, Mouse
<b>Format</b>	Antigen affinity purified
<b>Clonality</b>	Polyclonal (rabbit origin)
<b>Isotype</b>	Rabbit IgG
<b>Purity</b>	Antigen affinity purified
<b>Buffer</b>	Lyophilized from 1X PBS with 2% Trehalose
<b>UniProt</b>	O75563
<b>Applications</b>	Western Blot : 1-2ug/ml Flow Cytometry : 1-3ug/million cells Direct ELISA : 0.1-0.5ug/ml
<b>Limitations</b>	This SKAP2 antibody is available for research use only.



Flow cytometry testing of human U937 cells with SKAP2 antibody at 1ug/million cells (blocked with goat sera); Red=cells alone, Green=isotype control, Blue= SKAP2 antibody.



Western blot testing of 1) human HL60 and 2) mouse lung tissue lysate with SKAP2 antibody. Predicted molecular weight ~40 kDa.

## Description

Src kinase-associated phosphoprotein 2 is an enzyme that in humans is encoded by the SKAP2 gene. The protein encoded by this gene shares homology with Src kinase-associated phosphoprotein 1, and is a substrate of Src family kinases. It is an adaptor protein that is thought to play an essential role in the Src signaling pathway, and in regulating proper activation of the immune system. This protein contains an amino terminal coiled-coil domain for self-dimerization, a pleckstrin homology (PH) domain required for interactions with lipids at the membrane, and a Src homology (SH3) domain at the carboxy terminus. Some reports indicate that this protein inhibits actin polymerization through interactions with actin assembly factors, and might negatively regulate the invasiveness of tumors by modulating actin assembly. Alternative splicing results in multiple transcript variants encoding different isoforms.

## Application Notes

Optimal dilution of the SKAP2 antibody should be determined by the researcher.

## Immunogen

Recombinant human protein (amino acids E124-E208) was used as the immunogen for the SKAP2 antibody.

## Storage

After reconstitution, the SKAP2 antibody can be stored for up to one month at 4°C. For long-term, aliquot and store at -20°C. Avoid repeated freezing and thawing.