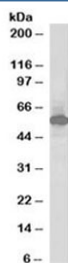


SIL1 Antibody (R33867)

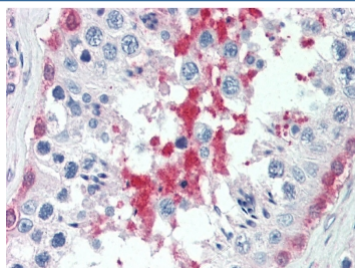
Catalog No.	Formulation	Size
R33867-100UG	0.5 mg/ml in 1X TBS, pH7.3, with 0.5% BSA (US sourced) and 0.02% sodium azide	100 ug

[Bulk quote request](#)

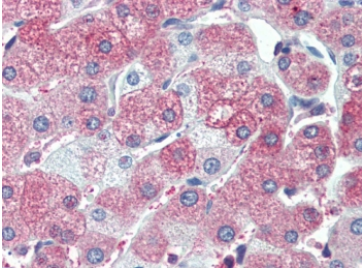
Availability	1-3 business days
Species Reactivity	Human
Format	Antigen affinity purified
Clonality	Polyclonal (goat origin)
Isotype	Goat Ig
Purity	Antigen affinity
Gene ID	64374
Localization	Cytoplasmic
Applications	Western Blot : 1-3ug/ml IHC (FFPE) : 5ug/ml ELISA (peptide) LOD : 1:8000
Limitations	This SIL1 antibody is available for research use only.



Western blot testing of human kidney lysate with SIL1 antibody at 1ug/ml. Predicted molecular weight: ~53 kDa.



IHC testing of FFPE human testis tissue with SIL1 antibody at 5ug/ml. Required HIER: steamed antigen retrieval with pH6 citrate buffer; AP-staining.



IHC testing of FFPE human liver tissue with SIL1 antibody at 5ug/ml. Required HIER: steamed antigen retrieval with pH6 citrate buffer; AP-staining.

Description

Additional name(s) for this target protein: BiP-associated protein, BAP

Application Notes

Optimal dilution of the SIL1 antibody should be determined by the researcher.

Immunogen

Amino acids ELLGSVNSLLKELR were used as the immunogen for this SIL1 antibody.

Storage

Aliquot and store the SIL1 antibody at -20oC.