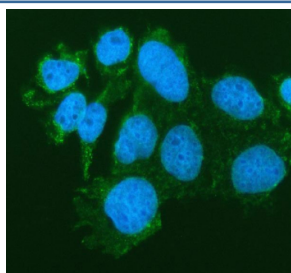


SIAE Antibody / Sialate O-acetyltransferase (RQ7692)

Catalog No.	Formulation	Size
RQ7692	0.5mg/ml if reconstituted with 0.2ml sterile DI water	100 ug

Bulk quote request

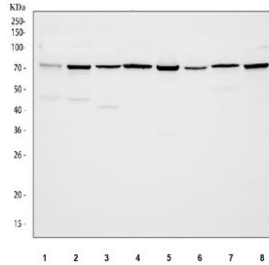
Availability	1-3 business days
Species Reactivity	Human, Mouse, Rat
Format	Antigen affinity purified
Clonality	Polyclonal (rabbit origin)
Isotype	Rabbit IgG
Purity	Antigen affinity purified
Buffer	Lyophilized from 1X PBS with 2% Trehalose
UniProt	Q9HAT2
Localization	Cytoplasm, secreted
Applications	Western Blot : 0.5-1ug/ml Immunohistochemistry (FFPE) : 2-5ug/ml Immunofluorescence : 5ug/ml Flow Cytometry : 1-3ug/million cells Direct ELISA : 0.1-0.5ug/ml
Limitations	This SIAE antibody is available for research use only.



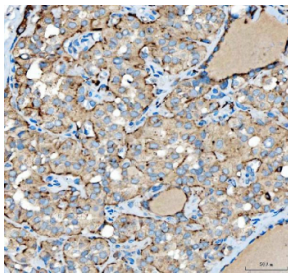
Immunofluorescent staining of FFPE human Caco-2 cells with SIAE antibody (green) and DAPI nuclear stain (blue). HIER: steam section in pH6 citrate buffer for 20 min.



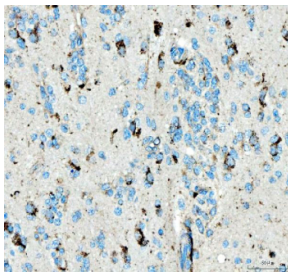
Western blot testing of human RT4 cell lysate with SIAE antibody. Predicted molecular weight ~58 kDa but may be observed at higher molecular weights due to glycosylation.



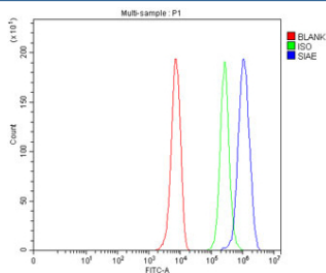
Western blot testing of 1) human RT4, 2) human U-251, 3) rat testis, 4) rat liver, 5) rat RH35, 6) mouse testis, 7) mouse liver and 8) mouse HEPA1-6 cell lysate with SIAE antibody. Predicted molecular weight ~58 kDa but may be observed at higher molecular weights due to glycosylation.



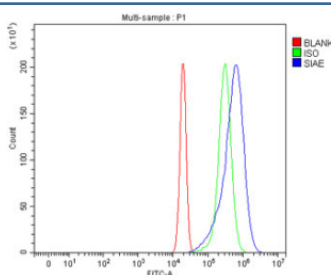
IHC staining of FFPE human thyroid papillary carcinoma tissue with SIAE antibody. HIER: boil tissue sections in pH8 EDTA for 20 min and allow to cool before testing.



IHC staining of FFPE human glioblastoma tissue with SIAE antibody. HIER: boil tissue sections in pH8 EDTA for 20 min and allow to cool before testing.



Flow cytometry testing of fixed and permeabilized human HepG2 cells with SIAE antibody at 1ug/million cells (blocked with goat sera); Red=cells alone, Green=isotype control, Blue= SIAE antibody.



Flow cytometry testing of fixed and permeabilized human RT4 cells with SIAE antibody at 1ug/million cells (blocked with goat sera); Red=cells alone, Green=isotype control, Blue= SIAE antibody.

This gene encodes an enzyme which removes 9-O-acetylation modifications from sialic acids. Mutations in this gene are associated with susceptibility to autoimmune disease 6. Multiple transcript variants encoding different isoforms, found either in the cytosol or in the lysosome, have been found for this gene.

Application Notes

Optimal dilution of the SIAE antibody should be determined by the researcher.

Immunogen

E. coli-derived recombinant human protein (amino acids R230-K523) was used as the immunogen for the SIAE antibody.

Storage

After reconstitution, the SIAE antibody can be stored for up to one month at 4oC. For long-term, aliquot and store at -20oC. Avoid repeated freezing and thawing.