

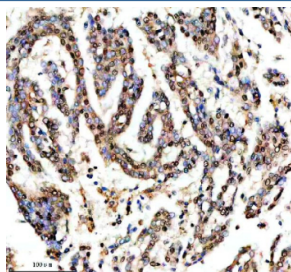
## SHP2 Antibody / PTPN11 [clone GBO-16] (RQ8892)

Catalog No.	Formulation	Size
RQ8892	Antibody in PBS with 0.02% sodium azide, 50% glycerol and 0.4-0.5mg/ml BSA	100 ul

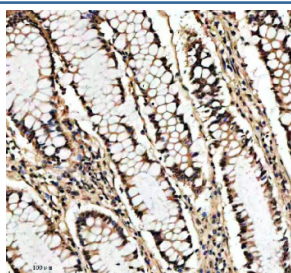
Recombinant **RABBIT MONOCLONAL**

[Bulk quote request](#)

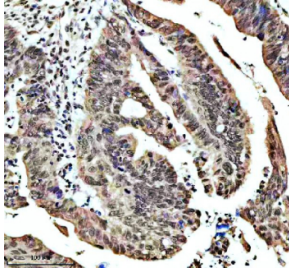
Availability	1-3 days
Species Reactivity	Human, Mouse, Rat
Format	Purified
Clonality	Recombinant Rabbit Monoclonal
Isotype	Rabbit IgG
Clone Name	GBO-16
Purity	Affinity chromatography
UniProt	Q06124
Localization	Nucleus, Cytoplasm
Applications	Western Blot : 1:500 Immunohistochemistry (FFPE) : 1:50
Limitations	This SHP2 antibody is available for research use only.



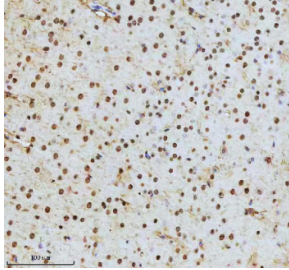
IHC staining of FFPE human lung cancer tissue with SHP2 antibody, HRP-secondary and DAB substrate. HIER: boil tissue sections in pH8 EDTA for 20 min and allow to cool before testing.



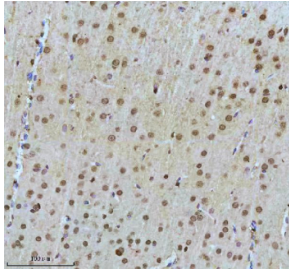
IHC staining of FFPE human colon tissue with SHP2 antibody, HRP-secondary and DAB substrate. HIER: boil tissue sections in pH8 EDTA for 20 min and allow to cool before testing.



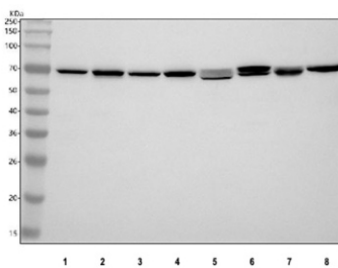
IHC staining of FFPE human colon cancer tissue with SHP2 antibody, HRP-secondary and DAB substrate. HIER: boil tissue sections in pH8 EDTA for 20 min and allow to cool before testing.



IHC staining of FFPE mouse brain tissue with SHP2 antibody, HRP-secondary and DAB substrate. HIER: boil tissue sections in pH8 EDTA for 20 min and allow to cool before testing.



IHC staining of FFPE rat brain tissue with SHP2 antibody, HRP-secondary and DAB substrate. HIER: boil tissue sections in pH8 EDTA for 20 min and allow to cool before testing.



Western blot testing of 1) human HeLa, 2) human Jurkat, 3) human HepG2, 4) human MCF7, 5) rat heart, 6) rat brain, 7) mouse heart and 8) mouse brain tissue lysate with SHP2 antibody. Predicted molecular weight ~70 kDa.