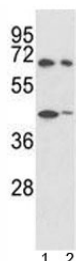


SHP2 Antibody / PTPN11 (F53772)

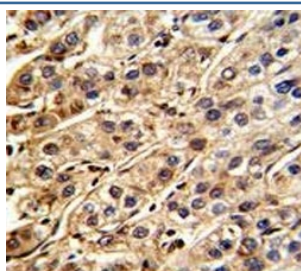
Catalog No.	Formulation	Size
F53772-0.4ML	In 1X PBS, pH 7.4, with 0.09% sodium azide	0.4 ml
F53772-0.08ML	In 1X PBS, pH 7.4, with 0.09% sodium azide	0.08 ml

[Bulk quote request](#)

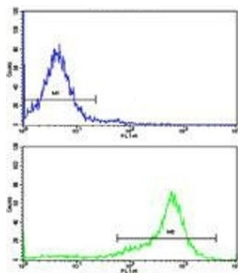
Availability	1-3 business days
Species Reactivity	Human
Predicted Reactivity	Chicken, Mouse, Rat
Format	Antigen affinity purified
Clonality	Polyclonal (rabbit origin)
Isotype	Rabbit Ig
Purity	Antigen affinity
UniProt	Q06124
Applications	Western Blot : 1:1000 IHC (Paraffin) : 1:50-1:100 Flow Cytometry : 1:10-1:50
Limitations	This SHP2 antibody is available for research use only.



Western blot analysis of SHP2 antibody and 1) 293, 2) K562 lysate. Predicted molecular weight: ~68kDa.



IHC analysis of FFPE human hepatocarcinoma stained with SHP2 antibody



Flow cytometric analysis of 293 cells using SHP2 antibody (green) compared to a [negative control](http://www.nsjbio.com/search_result.php?search_txt=n1001) (blue). FITC-conjugated goat-anti-rabbit secondary Ab was used for the analysis.

Description

SHP2, also known as PTPN11, is a member of the protein tyrosine phosphatase (PTP) family. PTPs are known to be signaling molecules that regulate a variety of cellular processes including cell growth, differentiation, mitotic cycle, and oncogenic transformation. This PTP contains two tandem Src homology-2 domains, which function as phospho-tyrosine binding domains and mediate the interaction of this PTP with its substrates. This PTP is widely expressed in most tissues and plays a regulatory role in various cell signaling events that are important for a diversity of cell functions, such as mitogenic activation, metabolic control, transcription regulation, and cell migration. Mutations in the gene are a cause of Noonan syndrome as well as acute myeloid leukemia.

Application Notes

Titration of the SHP2 antibody may be required due to differences in protocols and secondary/substrate sensitivity.

Immunogen

A portion of amino acids 526-551 from the human protein was used as the immunogen for this SHP2 antibody.

Storage

Aliquot the SHP2 antibody and store frozen at -20°C or colder. Avoid repeated freeze-thaw cycles.